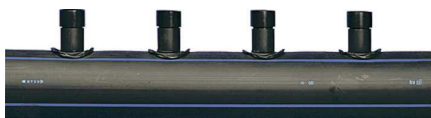


## Uponor Meltaway single manifold 160 1x10 c/c600 6m

**1033639**

- Single manifold



### About Uponor Meltaway single manifold

#### Specification

- snow- and ice melting system for areas with solid ground covering
- Made of high density polyethylene (HDPE) pipe
- Equipped with compact-welded couplings oriented in two directions with an angle of 120° between them

#### Application

- outdoor surface warming
- snow and ice melting

## Uponor Meltaway single manifold 160 1x10 c/c600 6m

1033639



### Technical documents

Download documents here 

#### Uponor UK

Blackmor Lane The Pavilion  
WD18 8GA, Watford  
UK

T +44 (0)1923 927000  
E [enquiries.uk@uponor.com](mailto:enquiries.uk@uponor.com)

[www.uponor.com/en-gb](http://www.uponor.com/en-gb)