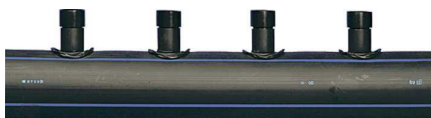


Uponor Meltaway single manifold 75 1x40 c/c150 6m

1033640

- Single manifold



About Uponor Meltaway single manifold

Specification

- snow- and ice melting system for areas with solid ground covering
- Made of high density polyethylene (HDPE) pipe
- Equipped with compact-welded couplings oriented in two directions with an angle of 120° between them

Application

- outdoor surface warming
- snow and ice melting

Uponor Meltaway single manifold 75 1x40 c/c150 6m

1033640



Technical documents

Download documents here 

Uponor UK

Blackmor Lane The Pavilion
WD18 8GA, Watford
UK

T +44 (0)1923 927000
E enquiries.uk@uponor.com

www.uponor.com/en-gb