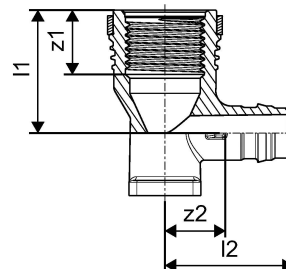
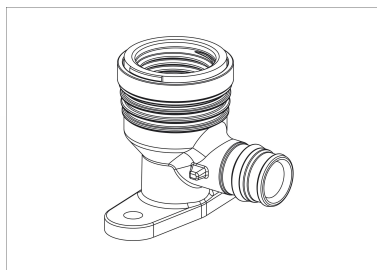


## Uponor Smart Aqua tap elbow Q&E PPSU 16-Rp1/2" l=43mm

1042342

- Material: PPSU



### About Uponor Smart Aqua tap elbow Q&E PPSU

#### Specification

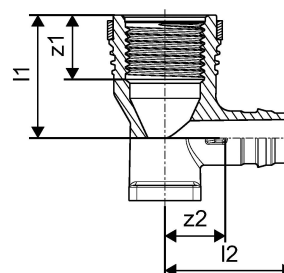
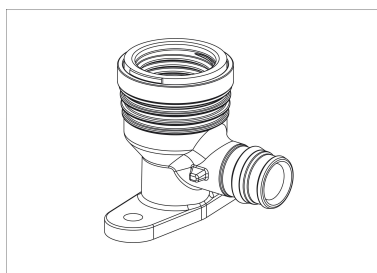
- Elbows for tap connection and
- Q&E rings must be ordered separately unless detailed in the description

#### Application

- For tap water installations
- Male and female threads acc.to BS EN 10226-1 (unless specified differently)

## Uponor Smart Aqua tap elbow Q&E PPSU 16-Rp1/2" l=43mm

1042342



### Measurements

Female thread Rp	0,5
Length (l1)	34
Length (l2)	16,5
Length (l3)	26,5
Z Measurement k	36
z1	16
Z2	9,6

### Product code

Item no EAN	6414907055805
Item no GF	35001042342
Item no GTIN	06414907055805
Item no NRF	5110335
Item no VVS	045283189

### Dimensions

Item Unit Height	50
Item Unit Length	44
Item Unit Weight	0,021
Item Unit Width	48
Item_UOM	pce

### Packaging

Packaging GTIN PL1	06414905267606
Packaging GTIN PL3	06414905267613
Packaging GTIN PL4	06414905267620
Packaging Height PL1	55
Packaging Height PL3	107
Packaging Height PL4	749
Packaging Length PL1	108

Packaging Length PL3	280
Packaging Length PL4	1120
Packaging Quantity PL1	5
Packaging Quantity PL3	40
Packaging Quantity PL4	4480
Packaging Type PL1	Plastic_Bag
Packaging Type PL3	Box
Packaging Type PL4	Pallet
Packaging Volume PL1	0,00052866
Packaging Volume PL3	0,00560252
Packaging Volume PL4	0,62748224
Packaging Weight PL1	0,11
Packaging Weight PL3	1,009
Packaging Weight PL4	113,019
Packaging Width PL1	89
Packaging Width PL3	187
Packaging Width PL4	748

## Technical documents

Download documents here 

### Uponor UK

Blackmor Lane The Pavilion  
WD18 8GA, Watford  
UK

T +44 (0)1923 927000  
E [enquiries.uk@uponor.com](mailto:enquiries.uk@uponor.com)

[www.uponor.com/en-gb](http://www.uponor.com/en-gb)