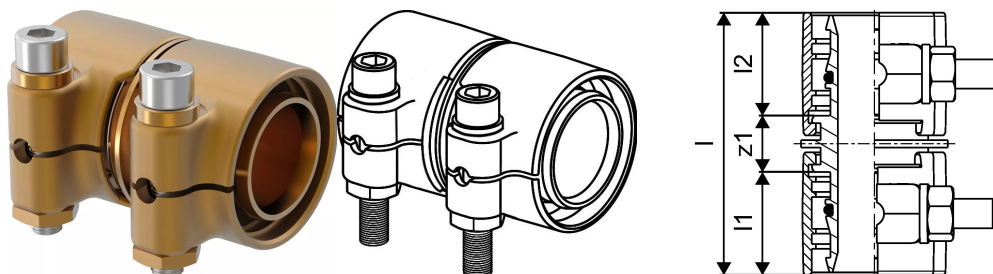


Uponor Wipex jointing equal PN6 50x4,6-50x4,6

1042984

- Connection of PE-Xa or PE pipe
- 6bar, SDR 11
- DR = dezincification resistance brass



About Uponor Wipex jointing equal PN6

Specification

- Wipex fittings in corrosion-resistant brass, dezincification based on EN ISO 6509 with stainless steel screw.
- O-ring sealing between Wipex coupling and base fitting connectors
- Bolt set for couplers include a hex socket bolt in stainless steel and the nut as well as washer from brass
- Pre-open sleeve design with assembled support part for the dimension 63-110mm.

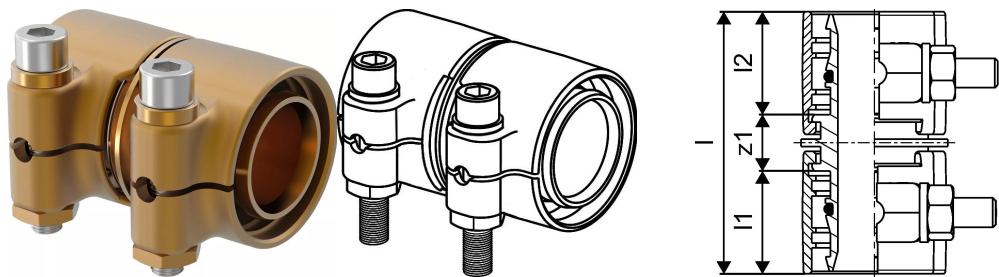
Application

- Fittings for pipe systems Thermo, Aqua, Quattro, Supra, Supra PLUS and Supra Standard
- Connection of PE and PE-Xa medium pipe to couplers with cylindrical inch male thread
- Max. operating temperature 95°C

Certification

- Approvals should be checked by local responsible person

Uponor Wipex jointing equal PN6 50x4,6-50x4,6
1042984



Technical data

Item (unit of measurement)	pce
Item no VVS	087882050
Item no LVI	1932104
Item no NRF	8360794
Length (l)	85 mm
Length (l1)	36 mm
Length (l2)	36 mm
Packaging Quantity PL1	1
Packaging Quantity PL3	10
Packaging Quantity PL4	600

Technical documents

Download documents here 

Uponor UK

Blackmor Lane The Pavilion
WD18 8GA, Watford
UK

T +44 (0)1923 927000
E enquiries.uk@uponor.com

www.uponor.com/en-gb