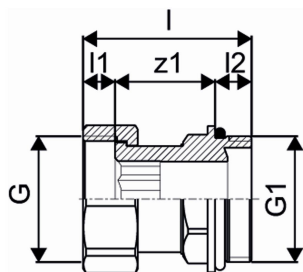


## Uponor Vario B swivel connection G1 set=2pcs

**1094746**

- for pump group MPG-UK



### About Uponor Vario B swivel connection G1

#### Specification

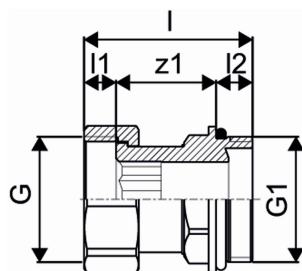
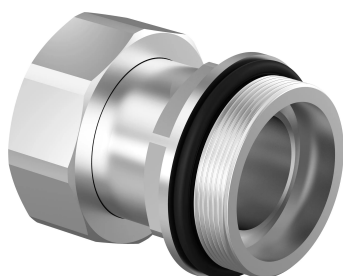
- Made of brass
- With integrated valves
- Connection right or left with flat sealing supply
- With lockshield valve or flowmeter for balancing and shutoff
- no primary connection to combine it with the correct accessories
- Loop connection G3/4" eurocone
- Loop distance 50 mm
- Bracket distance 210 mm

#### Application


- For underfloor heating and cooling
- Combineable with actuators FT 30x1,5
- Max. pressure: 6 bar at 60°C

## Uponor Vario B swivel connection G1 set=2pcs

1094746



### Technical documents

Download documents here 

#### Uponor UK

Blackmor Lane The Pavilion  
WD18 8GA, Watford  
UK

T +44 (0)1923 927000  
E [enquiries.uk@uponor.com](mailto:enquiries.uk@uponor.com)

[www.uponor.com/en-gb](http://www.uponor.com/en-gb)