

Uponor Combi Port Gen heat exchanger GKE 228H-40 CU

1116193

- Copper brazed heat exchanger GKE 228H-40 CU



About Uponor Combi Port Gen heat exchanger GKE 228H-40 CU

Specification

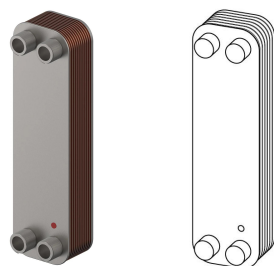
- Accessory components for hydraulic, safety, and control functions
- Designed for direct compatibility with Combi Port heat interface units and Central Port units
- Includes valves, connections, extensions, and functional add-ons
- Suitable for heating and domestic hot water applications
- Engineered for reliable integration into Uponor system solutions

Application

- Accessories for Uponor Combi Port heat interface units and Central Ports
- Decentralized heating and domestic hot water systems
- Centralized domestic hot water systems
- Residential and multi-dwelling buildings
- New installations and system extensions
- Commissioning, balancing, and system optimization

Uponor Combi Port Gen heat exchanger GKE 228H-40 CU

1116193

**Product code**

Item no EAN 6414900296045

Item no GTIN 06414900296045

Dimensions

Item Unit Height 73

Item Unit Length 330

Item Unit Weight 3,16

Item Unit Width 90

Item_UOM pce

Measurements

Length 330

Packaging

Packaging GTIN PL1 06414900392594

Packaging Height PL1 83

Packaging Length PL1 360

Packaging Quantity PL1 1

Packaging Type PL1 Base_Box

Packaging Volume PL1 0,0032868

Packaging Weight PL1 3,2100

Packaging Width PL1 110

Technical documents[Download documents here](#) Blackmor Lane The Pavilion
WD18 8GA, Watford
UKT +44 (0)1923 927000
E enquiries.uk@uponor.comwww.uponor.com/en-gb