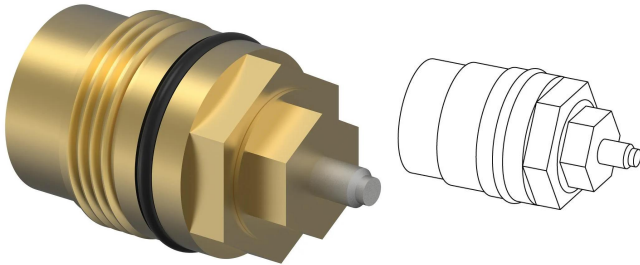


## Uponor Combi Port Gen valve insert TM KVS 2,8

**1116215**

- For Combi Ports



### About Uponor Combi Port Gen valve insert TM KVS 2,8

#### Specification

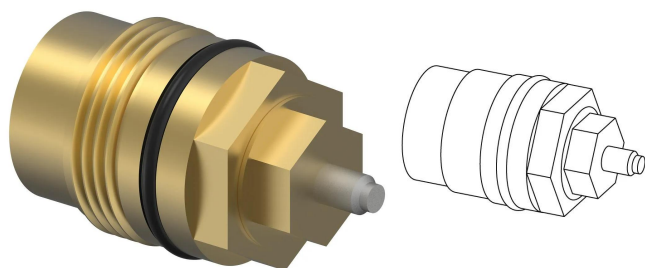
- Accessory components for hydraulic, safety, and control functions
- Designed for direct compatibility with Combi Port heat interface units and Central Port units
- Includes valves, connections, extensions, and functional add-ons
- Suitable for heating and domestic hot water applications
- Engineered for reliable integration into Uponor system solutions

#### Application

- Accessories for Uponor Combi Port heat interface units and Central Ports
- Decentralized heating and domestic hot water systems
- Centralized domestic hot water systems
- Residential and multi-dwelling buildings
- New installations and system extensions
- Commissioning, balancing, and system optimization

## Uponor Combi Port Gen valve insert TM KVS 2,8

1116215



### Product code

Item no EAN 6414900296755

Item no GTIN 06414900296755

### Dimensions

Item Unit Height 35

Item Unit Length 40

Item Unit Weight 0,055

Item Unit Width 35

Item\_UOM pce

### Measurements

Length 40

### Technical data

Recycling Text Block PL1 Low density polyethylene

### Packaging

Packaging GTIN PL1 06414900391979

Packaging Height PL1 45

Packaging Length PL1 70

Packaging Material (number) PL1 4

Packaging Material PL1 Low density polyethylene

Packaging Material (short) PL1 LDPE

Packaging Quantity PL1 1

Packaging Type PL1 Plastic\_Bag

Packaging Volume PL1 0,00017325

Packaging Weight PL1 0,1050

Packaging Width PL1 55

## Technical documents

Download documents here 

### Uponor UK

Blackmor Lane The Pavilion  
WD18 8GA, Watford  
UK

T +44 (0)1923 927000  
E [enquiries.uk@uponor.com](mailto:enquiries.uk@uponor.com)

[www.uponor.com/en-gb](http://www.uponor.com/en-gb)