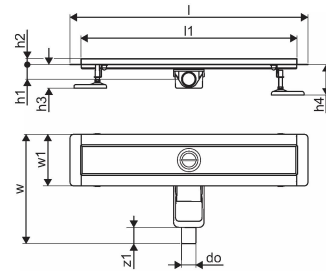
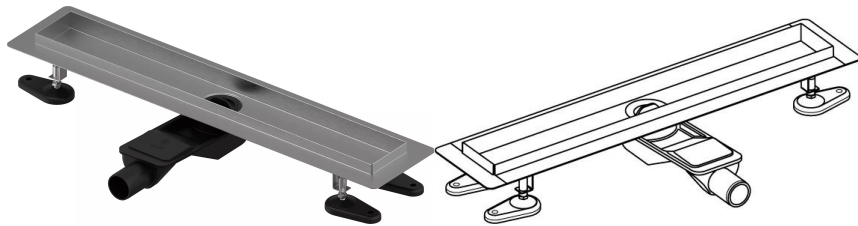


Uponor Aqua Ambient shower inlet low silver 30/900mm

1136410

- compatible to various grates (see separate items)
- for low floor construction
- flow rate: 0,6 l/s
- siphon with cleaning basket, connection to sewage pipes DN 40, with horizontal 360° alignment
- material body: stainless steel
- material siphon: polypropylene / ABS



About Uponor Aqua Ambient shower inlet low silver

Specification

- Modern construction and stylish design in different sizes: 600, 700, 800, 900, 1000mm
- Wide sealing collar (30mm) ensuring tight jointing to the floor construction
- Adjustable height and fixable legs for integration in every kind of floor construction
- Easy installation due to product completeness and compatibility to wastewater installation system (dimension of waste pipes)
- 360° tunable siphon

Application

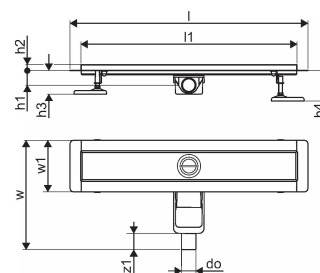
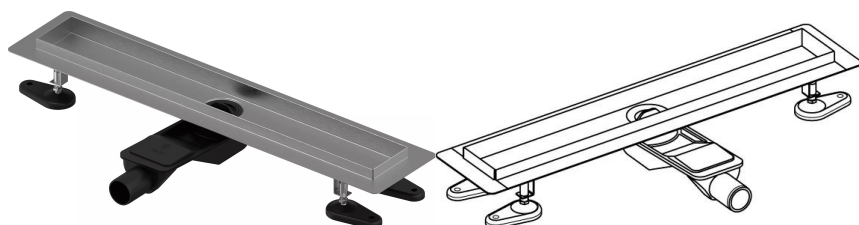
- Housing sewage systems

Certification

- Technical assessment acc EN 1253

Uponor Aqua Ambient shower inlet low silver 30/900mm

1136410



Technical data

Item no EAN	6414900483087
Item no GTIN	06414900483087
Item (unit of measurement)	pce
Length (l)	960 mm
Length (l1)	900 mm
Z-measurement h	98 mm
Z-measurement h1	82 mm
Z-measurement h2	40 mm
Z-measurement w	303 mm
Z-measurement w1	143 mm
Packaging Quantity 1	1
Packaging Quantity 4	50
Packaging GTIN PL1	06414900485401
Packaging GTIN PL4	06414900485609
Item Unit Height	83 mm
Item Unit Weight	2,22 kg
Item Unit Width	143 mm

Technical documents

Download documents here

Uponor UK

Blackmor Lane The Pavilion
WD18 8GA, Watford
UK

T +44 (0)1923 927000
E enquiries.uk@uponor.com

www.uponor.com/en-gb