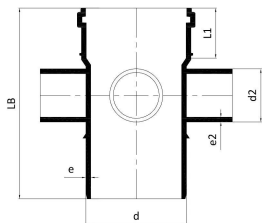


GF Silenta Premium collector 87,5° 110-58mm

1146529

- 4 way boss inlet connections
- Light Grey, PP-material with inorganic filler
- According to BS EN 1451



About GF Silenta Premium collector 87,5°

Specification

- Manufactured with the latest generation of multilayer (three different layers) polypropylene technology
- System according to the requirements of BS EN 1451
- Application are B to BS EN 1451
- 12 db(A) at 4l/s - tested to BS EN 14366
- Fire class D - s2, d2 to BS EN 13501-1
- Pipe diameters from 58 mm to 200 mm
- Wide range of fittings to give complete design freedom
- For use with GF Silent Clamp range

Application

Applications:

Silenta Premium is suitable for various wastewater types and areas of use, including:

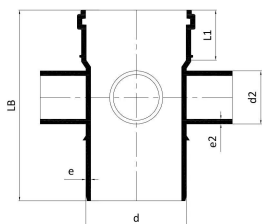
- High end residential, multi-family residential, hotels, healthcare, restaurants, etc
- Sustainable/green buildings
- Industrial facilities (short- and long-term use)
- Domestic sewage and rainwater
- Wastewater from kitchens, bathrooms, laundry rooms, toilets, and similar spaces

Commercial/Industrial Wastewater:

- For untreated wastewater containing harmful substances
- Guidance relating to chemical resistance of Polypropylene can be sought from ISO/TR 10358
- For full system chemical compatibility please contact GF
- Required details for assessment:
 - Substance composition
 - Concentration and pH values
 - Quantities and flow rates
 - Wastewater temperature

GF Silenta Premium collector 87,5° 110-58mm

1146529



Status

Item Available From date

2026-03-01

Product code

Item no EAN	8698652143569
Item no GF	4501911031121
Item no GTIN	08698652143569
Item no VVS	186845190

Dimensions

Item Unit Height	210
Item Unit Length	210
Item Unit Weight	1,188
Item Unit Width	210
Item_UOM	pce

Packaging

Packaging GTIN PL1	06414900268035
Packaging GTIN PL2	06414900052146
Packaging GTIN PL4	06414900247160
Packaging Height PL1	210
Packaging Height PL2	360
Packaging Height PL4	1200
Packaging Length PL1	210
Packaging Length PL2	390
Packaging Length PL4	1200
Packaging Quantity PL1	1
Packaging Quantity PL2	4
Packaging Quantity PL4	96
Packaging Type PL1	Plastic_Bag
Packaging Type PL2	Medium_Box

Packaging Type PL4	Pallet
Packaging Volume PL1	0,009261
Packaging Volume PL2	0,040716
Packaging Volume PL4	1,44
Packaging Weight PL1	1,198
Packaging Weight PL2	4,892
Packaging Weight PL4	139,0096
Packaging Width PL1	210
Packaging Width PL2	290
Packaging Width PL4	1000
Measurements	
Z Measurement d2	58
Z Measurement e	5,3

Technical documents

Download documents here 

Uponor UK

Blackmor Lane The Pavillion
WD18 8GA, Watford
UK

T +44 (0)1923 381212

E
customerservice.uk.bfs@georgfi
scher.com