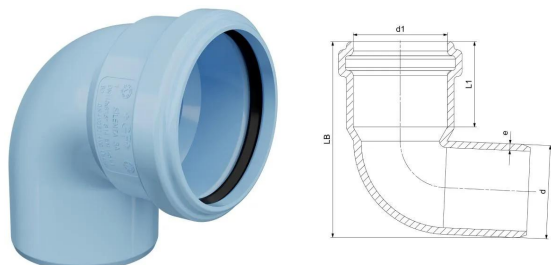


GF Silenta 3A elbow 87,5° 110mm

1146662

- Light blue, PP-material with inorganic filler
- According to BS EN 1451



About GF Silenta 3A elbow 87,5°

Specification

- Manufactured with the latest generation of multilayer (three different layers) polypropylene technology
- System according to the requirements of BS EN 1451
- Application area B to BS EN 1451
- 15 db(A) at 4l/s - tested to BS EN 14366
- Fire class D - s2, d2 to BS EN 13501-1
- Pipe diameters from 32 mm to 200 mm
- Wide range of fittings to give complete design freedom
- For use with GF Silent Clamp range

Application

Applications:

Silenta 3A is suitable for various wastewater types and areas of use, including:

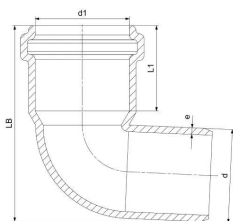
- High end residential, multi-family residential, hotels, healthcare, restaurants, etc
- Sustainable/green buildings
- Industrial facilities (short- and long-term use)
- Domestic sewage and rainwater
- Wastewater from kitchens, bathrooms, laundry rooms, toilets, and similar spaces

Commercial/Industrial Wastewater:

- For untreated wastewater containing harmful substances
- Guidance relating to chemical resistance of Polypropylene can be sought from ISO/TR 10358
- For full system chemical compatibility please contact GF
- Required details for assessment:
 - Substance composition
 - Concentration and pH values
 - Quantities and flow rates
 - Wastewater temperature

GF Silenta 3A elbow 87,5° 110mm

1146662



Status

Item Available From date 2026-03-01

Product code

Item no EAN	8698652001050
Item no GF	4704111001521
Item no GTIN	08698652001050
Item no NOBB	60823827
Item no NRF	1486158
Item no RSK	2832168
Item no VVS	186721110

Dimensions

Item Unit Height	185
Item Unit Length	135
Item Unit Weight	0,465
Item Unit Width	177
Item_UOM	pce

Packaging

Packaging GTIN PL1	06414900555210
Packaging GTIN PL2	06414900566162
Packaging GTIN PL4	06414900566179
Packaging Height PL1	185
Packaging Height PL2	400
Packaging Height PL4	944
Packaging Length PL1	135
Packaging Length PL2	800
Packaging Length PL4	1200
Packaging Quantity PL1	1
Packaging Quantity PL2	40

Packaging Quantity PL4	160
Packaging Type PL1	Piece
Packaging Type PL2	Box
Packaging Type PL4	Pallet
Packaging Volume PL1	0,004420575
Packaging Volume PL2	0,192
Packaging Volume PL4	0,90624
Packaging Weight PL1	0,465
Packaging Weight PL2	20,16
Packaging Weight PL4	105,64
Packaging Width PL1	177
Packaging Width PL2	600
Packaging Width PL4	800

Measurements

Wall thickness_s	16
Z Measurement d	110
Z Measurement d1	110
Z Measurement e	3,4
Z Measurement L1	58

Technical documents

Download documents here

Uponor UK

Blackmor Lane The Pavillion
 WD18 8GA, Watford
 UK

T +44 (0)1923 381212
 E
 customerservice.uk.bfs@georgfi
 scher.com