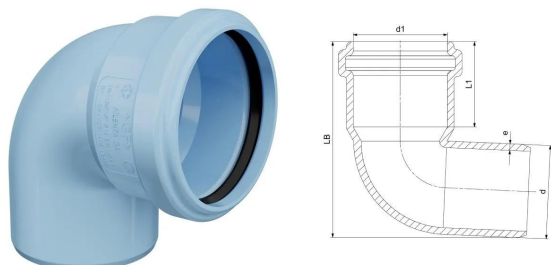


GF Silenta 3A elbow 87,5° 160mm

1146668

- Light blue, PP-material with inorganic filler
- According to BS EN 1451



About GF Silenta 3A elbow 87,5°

Specification

- Manufactured with the latest generation of multilayer (three different layers) polypropylene technology
- System according to the requirements of BS EN 1451
- Application area B to BS EN 1451
- 15 db(A) at 4l/s - tested to BS EN 14366
- Fire class D - s2, d2 to BS EN 13501-1
- Pipe diameters from 32 mm to 200 mm
- Wide range of fittings to give complete design freedom
- For use with GF Silent Clamp range

Application

Applications:

Silenta 3A is suitable for various wastewater types and areas of use, including:

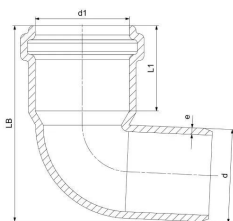
- High end residential, multi-family residential, hotels, healthcare, restaurants, etc
- Sustainable/green buildings
- Industrial facilities (short- and long-term use)
- Domestic sewage and rainwater
- Wastewater from kitchens, bathrooms, laundry rooms, toilets, and similar spaces

Commercial/Industrial Wastewater:

- For untreated wastewater containing harmful substances
- Guidance relating to chemical resistance of Polypropylene can be sought from ISO/TR 10358
- For full system chemical compatibility please contact GF
- Required details for assessment:
 - Substance composition
 - Concentration and pH values
 - Quantities and flow rates
 - Wastewater temperature

GF Silenta 3A elbow 87,5° 160mm

1146668



Status

Item Available From date 2026-03-01

Product code

Item no EAN	8698652001098
Item no GF	4704116001921
Item no GTIN	08698652001098
Item no NOBB	60823833
Item no NRF	1486164
Item no RSK	2832170
Item no VVS	186721160

Dimensions

Item Unit Height	254
Item Unit Length	188
Item Unit Weight	1,198
Item Unit Width	265
Item_UOM	pce

Packaging

Packaging GTIN PL1	06414900601634
Packaging GTIN PL2	06414900566285
Packaging GTIN PL4	06414900566292
Packaging Height PL1	254
Packaging Height PL2	360
Packaging Height PL4	924
Packaging Length PL1	188
Packaging Length PL2	590
Packaging Length PL4	1200
Packaging Quantity PL1	1
Packaging Quantity PL2	6

Packaging Quantity PL4	48
Packaging Type PL1	Piece
Packaging Type PL2	Box
Packaging Type PL4	Pallet
Packaging Volume PL1	0,01265428
Packaging Volume PL2	0,082836
Packaging Volume PL4	0,88704
Packaging Weight PL1	1,198
Packaging Weight PL2	8,228
Packaging Weight PL4	90,824
Packaging Width PL1	265
Packaging Width PL2	390
Packaging Width PL4	800
Measurements	
Wall thickness_s	16
Z Measurement d	160
Z Measurement d1	160
Z Measurement e	4,9
Z Measurement L1	73

Technical documents

Download documents here

Uponor UK

Blackmor Lane The Pavillion
 WD18 8GA, Watford
 UK

T +44 (0)1923 381212
 E
 customerservice.uk.bfs@georgfi
 scher.com