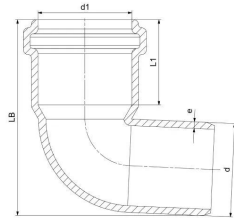


GF HT-PP elbow 87,5° 40mm

1150128

- Grey, PP-material
- According to BS EN 1451



About GF HT-PP elbow 87,5°

Specification

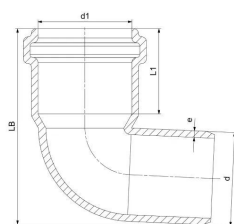
- Manufactured using chemical and temperature resistant Polypropylene
- System according to the requirements of BS EN 1451
- Application area B to BS EN 1451
- Fire class E to BS EN 13501-1
- Pipe diameters from 32 mm to 160 mm
- Wide range of fittings to give complete design freedom
- For use with GF standard Clamp fittings

Application

- Office buildings and conference halls
- Schools, libraries, hospitals, hotels, and residential buildings
- Sustainable and green buildings
- Industrial facilities for both short- and long-term applications
- Ideal for pre-fabricated buildings

GF HT-PP elbow 87,5° 40mm

1150128



Status

Item Available From date 2026-03-01

Product code

Item no EAN	8698652043135
Item no GF	4901104001321
Item no GTIN	08698652043135
Item no VVS	186114040

Dimensions

Item Unit Height	80
Item Unit Length	55
Item Unit Weight	0,046
Item Unit Width	120
Item_UOM	pce

Packaging

Packaging GTIN PL1	06414900601566
Packaging GTIN PL2	06414900230926
Packaging GTIN PL4	06414900103701
Packaging Height PL1	80
Packaging Height PL2	400
Packaging Height PL4	1200
Packaging Length PL1	55
Packaging Length PL2	800
Packaging Length PL4	1200
Packaging Quantity PL1	1
Packaging Quantity PL2	500
Packaging Quantity PL4	3000
Packaging Type PL1	Piece
Packaging Type PL2	Medium_Box

Packaging Type PL4	Pallet
Packaging Volume PL1	0,000528
Packaging Volume PL2	0,192
Packaging Volume PL4	1,44
Packaging Weight PL1	0,046
Packaging Weight PL2	23
Packaging Weight PL4	163
Packaging Width PL1	120
Packaging Width PL2	600
Packaging Width PL4	1000

Measurements

Wall thickness_s	16
Z Measurement d	40
Z Measurement d1	40
Z Measurement d2	49,6
Z Measurement e	1,8
Z Measurement L1	39,4
z1	19,9
Z2	19,9

Technical documents

Download documents here 

Uponor UK

Blackmor Lane The Pavillion
WD18 8GA, Watford
UK

T +44 (0)1923 381212
E
customerservice.uk.bfs@georgfi
scher.com