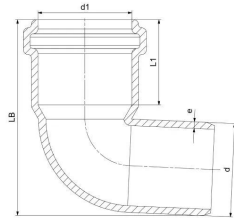


GF HT-PP elbow 87,5° 50mm

1150134

- Grey, PP-material
- According to BS EN 1451



About GF HT-PP elbow 87,5°

Specification

- Manufactured using chemical and temperature resistant Polypropylene
- System according to the requirements of BS EN 1451
- Application area B to BS EN 1451
- Fire class E to BS EN 13501-1
- Pipe diameters from 32 mm to 160 mm
- Wide range of fittings to give complete design freedom
- For use with GF standard Clamp fittings

Application

- Office buildings and conference halls
- Schools, libraries, hospitals, hotels, and residential buildings
- Sustainable and green buildings
- Industrial facilities for both short- and long-term applications
- Ideal for pre-fabricated buildings

GF HT-PP elbow 87,5° 50mm

1150134



Status

Item Available From date 2026-03-01

Product code

Item no EAN	8698652031842
Item no GF	4901105002421
Item no GTIN	08698652031842
Item no VVS	186114050

Dimensions

Item Unit Height	125
Item Unit Length	77
Item Unit Weight	0,073
Item Unit Width	120
Item_UOM	pce

Packaging

Packaging GTIN PL1	06414900555043
Packaging GTIN PL2	06414900230988
Packaging GTIN PL4	06414900103787
Packaging Height PL1	125
Packaging Height PL2	400
Packaging Height PL4	1200
Packaging Length PL1	77
Packaging Length PL2	800
Packaging Length PL4	1200
Packaging Quantity PL1	1
Packaging Quantity PL2	300
Packaging Quantity PL4	1800
Packaging Type PL1	Piece
Packaging Type PL2	Medium_Box

Packaging Type PL4	Pallet
Packaging Volume PL1	0,001155
Packaging Volume PL2	0,192
Packaging Volume PL4	1,44
Packaging Weight PL1	0,073
Packaging Weight PL2	21,9
Packaging Weight PL4	156,4
Packaging Width PL1	120
Packaging Width PL2	600
Packaging Width PL4	1000

Measurements

Wall thickness_s	16
Z Measurement d	50
Z Measurement d1	50
Z Measurement d2	59,6
Z Measurement e	1,8
Z Measurement L1	49,4
z1	23,9
Z2	23,9

Technical documents

Download documents here

Uponor UK

Blackmor Lane The Pavillion
 WD18 8GA, Watford
 UK

T +44 (0)1923 381212
 E
 customerservice.uk.bfs@georgfi
 scher.com