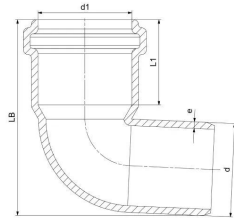


GF HT-PP elbow 87,5° 75mm

1150139

- Grey, PP-material
- According to BS EN 1451



About GF HT-PP elbow 87,5°

Specification

- Manufactured using chemical and temperature resistant Polypropylene
- System according to the requirements of BS EN 1451
- Application area B to BS EN 1451
- Fire class E to BS EN 13501-1
- Pipe diameters from 32 mm to 160 mm
- Wide range of fittings to give complete design freedom
- For use with GF standard Clamp fittings

Application

- Office buildings and conference halls
- Schools, libraries, hospitals, hotels, and residential buildings
- Sustainable and green buildings
- Industrial facilities for both short- and long-term applications
- Ideal for pre-fabricated buildings

GF HT-PP elbow 87,5° 75mm

1150139



Status

Item Available From date 2026-03-01

Product code

| | |
|--------------|----------------|
| Item no EAN | 8698652031866 |
| Item no GF | 4901107503421 |
| Item no GTIN | 08698652031866 |
| Item no VVS | 186114075 |

Dimensions

| | |
|------------------|-------|
| Item Unit Height | 145 |
| Item Unit Length | 100 |
| Item Unit Weight | 0,165 |
| Item Unit Width | 133 |
| Item_UOM | pce |

Packaging

| | |
|------------------------|----------------|
| Packaging GTIN PL1 | 06414900553421 |
| Packaging GTIN PL2 | 06414900231039 |
| Packaging GTIN PL4 | 06414900103886 |
| Packaging Height PL1 | 145 |
| Packaging Height PL2 | 400 |
| Packaging Height PL4 | 1200 |
| Packaging Length PL1 | 100 |
| Packaging Length PL2 | 800 |
| Packaging Length PL4 | 1200 |
| Packaging Quantity PL1 | 1 |
| Packaging Quantity PL2 | 100 |
| Packaging Quantity PL4 | 600 |
| Packaging Type PL1 | Piece |
| Packaging Type PL2 | Medium_Box |

| | |
|----------------------|-----------|
| Packaging Type PL4 | Pallet |
| Packaging Volume PL1 | 0,0019285 |
| Packaging Volume PL2 | 0,192 |
| Packaging Volume PL4 | 1,44 |
| Packaging Weight PL1 | 0,165 |
| Packaging Weight PL2 | 16,5 |
| Packaging Weight PL4 | 124 |
| Packaging Width PL1 | 133 |
| Packaging Width PL2 | 600 |
| Packaging Width PL4 | 1000 |

Measurements

| | |
|------------------|------|
| Wall thickness_s | 16 |
| Z Measurement d | 75 |
| Z Measurement d1 | 75 |
| Z Measurement d2 | 84,6 |
| Z Measurement e | 2,3 |
| Z Measurement L1 | 53,6 |
| z1 | 35,9 |
| Z2 | 35,9 |

Technical documents

Download documents here

Uponor UK

Blackmor Lane The Pavillion
WD18 8GA, Watford
UK

T +44 (0)1923 381212
E
customerservice.uk.bfs@georgfi
scher.com