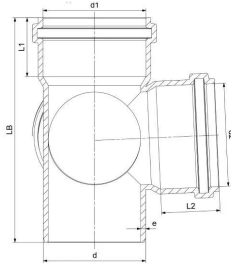


## GF HT-PP corner double branch 87,5° 110-110mm

**1150172**

- Grey, PP-material
- According to BS EN 1451



### About GF HT-PP corner double branch 87,5°

#### Specification

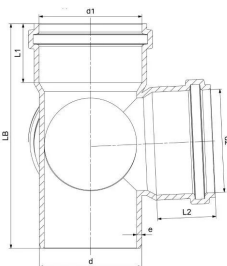
- Manufactured using chemical and temperature resistant Polypropylene
- System according to the requirements of BS EN 1451
- Application area B to BS EN 1451
- Fire class E to BS EN 13501-1
- Pipe diameters from 32 mm to 160 mm
- Wide range of fittings to give complete design freedom
- For use with GF standard Clamp fittings

#### Application

- Office buildings and conference halls
- Schools, libraries, hospitals, hotels, and residential buildings
- Sustainable and green buildings
- Industrial facilities for both short- and long-term applications
- Ideal for pre-fabricated buildings

## GF HT-PP corner double branch 87,5° 110-110mm

1150172



### Status

Item Available From date

2026-03-01

### Product code

Item no EAN	8698652125589
Item no GF	4901211015521
Item no GTIN	08698652125589
Item no VVS	186422110

### Dimensions

Item Unit Height	241
Item Unit Length	201
Item Unit Weight	0,99
Item Unit Width	201
Item_UOM	pce

### Measurements

Length (l2)	66,3
Wall thickness_s	16
Z Measurement b1	6
Z Measurement d	110
Z Measurement d1	110
Z Measurement d2	121,2
Z Measurement d3	110,5
Z Measurement d3	110,5
Z Measurement d4	121,2
Z Measurement e	3,4
Z Measurement L1	65,4
z1	111
Z2	4,8

### Packaging

Packaging GTIN PL1	06414900554435
Packaging GTIN PL2	06414900231367
Packaging GTIN PL4	06414900104852
Packaging Height PL1	241
Packaging Height PL2	400
Packaging Height PL4	1200
Packaging Length PL1	201
Packaging Length PL2	800
Packaging Length PL4	1200
Packaging Quantity PL1	1
Packaging Quantity PL2	20
Packaging Quantity PL4	120
Packaging Type PL1	Piece
Packaging Type PL2	Medium_Box
Packaging Type PL4	Pallet
Packaging Volume PL1	0,009736641
Packaging Volume PL2	0,192
Packaging Volume PL4	1,152
Packaging Weight PL1	0,99
Packaging Weight PL2	19,8
Packaging Weight PL4	143,8
Packaging Width PL1	201
Packaging Width PL2	600
Packaging Width PL4	800

## Technical documents

Download documents here

### Uponor UK

Blackmor Lane The Pavillion  
WD18 8GA, Watford  
UK

T +44 (0)1923 381212

E  
customerservice.uk.bfs@georgfi  
scher.com