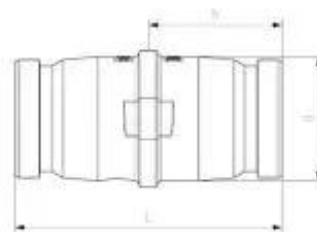
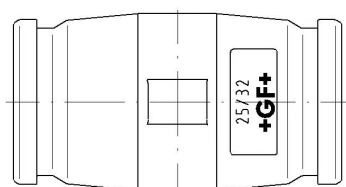


GF iFIT coupler 16/20

1151116

- Material: PPSU
- PN 16 at 20°C



About GF iFIT coupler

Specification

- The iFIT system is subject to constant inspection by internal and external bodies.
- These inspections range from quality assurance during production to ISO certification for environmental and process safety. The iFIT system meets the requirements for the most important applications in the building technology and is subject to constant monitoring by the licensing offices for drinking water and heating installations on land and sea.

Application

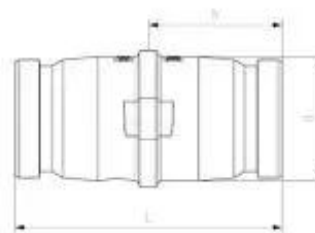
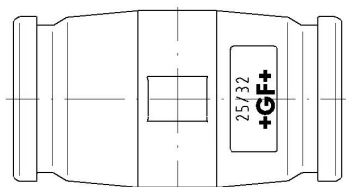
- Application area Cold and hot water, HVAC, greywater
-
- Installation Surface and flush-mounted pipes, pipe-in-pipe technology

Certification

- SVGW
- DVGW
- ÖVGW

GF iFIT coupler 16/20

1151116



Product code

Item no EAN	7611205885687
Item no GF	762101044
Item no GTIN	07611205885687
Item no LVI	2075341
Item no RSK	1878644

Dimensions

Item Unit Height	22
Item Unit Length	43
Item Unit Weight	0,008
Item Unit Width	20
Item_UOM	pce

Measurements

LENGTH_L	43
Z Measurement h	22

Packaging

Packaging GTIN PL1	07611205904975
Packaging GTIN PL2	07611205906078
Packaging GTIN PL4	06414900118743
Packaging Height PL1	40
Packaging Height PL2	225
Packaging Height PL4	900
Packaging Length PL1	115
Packaging Length PL2	410
Packaging Length PL4	1200
Packaging Quantity PL1	10
Packaging Quantity PL2	500
Packaging Quantity PL4	22500

Packaging Type PL1	Plastic_Bag
Packaging Type PL2	Medium_Box
Packaging Type PL4	Pallet
Packaging Volume PL1	0,000368
Packaging Volume PL2	0,02444625
Packaging Volume PL4	0,864
Packaging Weight PL1	0,0872
Packaging Weight PL2	4,6712612150978
Packaging Weight PL4	235,206754679401
Packaging Width PL1	80
Packaging Width PL2	265
Packaging Width PL4	800

Technical documents

Download documents here 

Uponor UK

Blackmor Lane The Pavilion
WD18 8GA, Watford
UK

T +44 (0)1923 927000
E enquiries.uk@uponor.com

www.uponor.com/en-gb