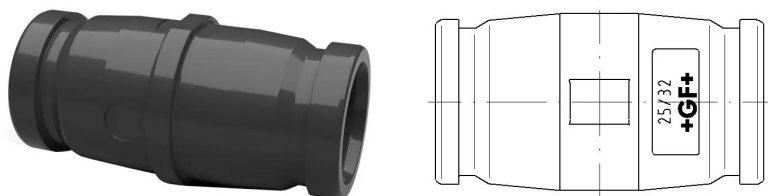


GF iFit coupler 25/32

1151154

- Material: PPSU
- PN 16 at 20°C



About GF iFIT coupler

Specification

- The iFIT system is subject to constant inspection by internal and external bodies.
- These inspections range from quality assurance during production to ISO certification for environmental and process safety. The iFIT system meets the requirements for the most important applications in the building technology and is subject to constant monitoring by the licensing offices for drinking water and heating installations on land and sea.

Application

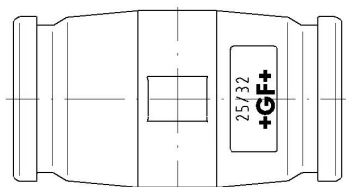
- Application area Cold and hot water, HVAC, greywater
-
- Installation Surface and flush-mounted pipes, pipe-in-pipe technology

Certification

- SVGW
- DVGW
- ÖVGW

GF iFit coupler 25/32

1151154



Product code

Item no EAN	7611205891954
Item no GF	762101175
Item no GTIN	07611205891954
Item no LVI	1749404
Item no RSK	1878645

Dimensions

Item Unit Height	30
Item Unit Length	55
Item Unit Weight	0,023
Item Unit Width	30
Item_UOM	pce

Measurements

LENGTH_L	56
Z Measurement h	28

Packaging

Packaging GTIN PL1	6414900547758
Packaging GTIN PL2	06414900597722
Packaging GTIN PL4	6414900118729
Packaging Height PL1	35
Packaging Height PL2	500
Packaging Height PL4	800
Packaging Length PL1	55
Packaging Length PL2	220
Packaging Length PL4	1200
Packaging Quantity PL1	5
Packaging Quantity PL2	200
Packaging Quantity PL4	9000

Packaging Type PL1	Plastic_Bag
Packaging Type PL2	Medium_Box
Packaging Type PL4	Pallet
Packaging Volume PL1	0,00028875
Packaging Volume PL2	0,0275
Packaging Volume PL4	0,768
Packaging Weight PL1	0,120
Packaging Weight PL2	5
Packaging Weight PL4	254
Packaging Width PL1	150
Packaging Width PL2	250
Packaging Width PL4	800

Technical documents

Download documents here 

Uponor UK

Blackmor Lane The Pavilion
WD18 8GA, Watford
UK

T +44 (0)1923 927000
E enquiries.uk@uponor.com

www.uponor.com/en-gb