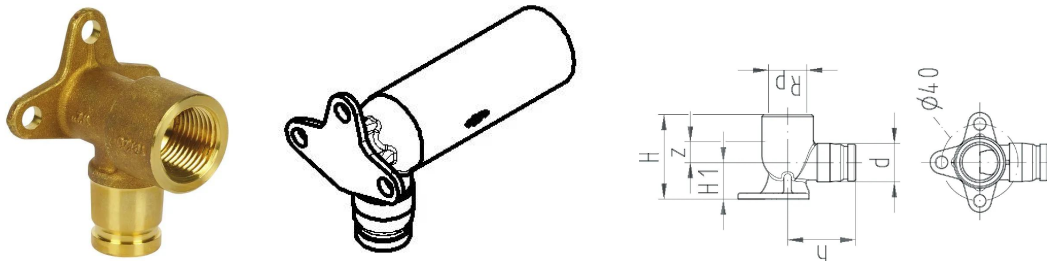


GF iFIT pipe outlet single 16/20-1/2"

1151252

- Material: DZR brass
- Connection: female thread
- PN 16 at 20°C



About GF iFIT pipe outlet single

Specification

- The iFIT system is subject to constant inspection by internal and external bodies.
- These inspections range from quality assurance during production to ISO certification for environmental and process safety. The iFIT system meets the requirements for the most important applications in the building technology and is subject to constant monitoring by the licensing offices for drinking water and heating installations on land and sea.

Application

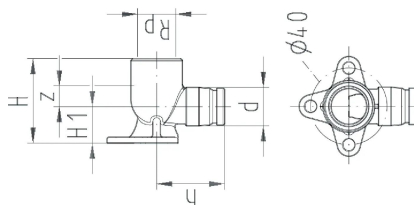
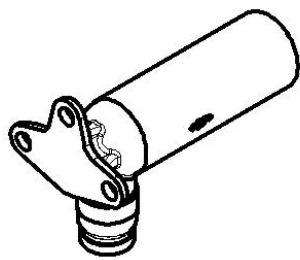
- Application area Cold and hot water, HVAC, greywater
-
- Installation Surface and flush-mounted pipes, pipe-in-pipe technology

Certification

- SVGW
- DVGW
- ÖVGW

GF iFIT pipe outlet single 16/20-1/2"

1151252



Status

Item Available Till date 2026-05-30T00:00:00.000+0200

Until stocks last Until stocks last

Product code

Item no EAN 7611205906962

Item no GF 762101321

Item no GTIN 07611205906962

Item Replacement 1 1162974

Dimensions

Item Unit Height 52

Item Unit Length 95

Item Unit Weight 0,272

Item Unit Width 67

Item_UOM pce

Packaging

Packaging GTIN PL1 06414900454421

Packaging GTIN PL2 06414900454438

Packaging Height PL1 110

Packaging Height PL2 100

Packaging Length PL1 105

Packaging Length PL2 200

Packaging Quantity PL1 2

Packaging Quantity PL2 20

Packaging Type PL1 Plastic_Bag

Packaging Type PL2 Medium_Box

Packaging Volume PL1 0,0008085

Packaging Volume PL2 0,004

Packaging Weight PL1 0,554

Packaging Weight PL2	5,6
Packaging Width PL1	70
Packaging Width PL2	200

Measurements

Z Measurement h	39
Z Measurement h1	19
Z	63

Technical documents

Download documents here 

Uponor UK

Blackmor Lane The Pavilion
WD18 8GA, Watford
UK

T +44 (0)1923 927000
E enquiries.uk@uponor.com

www.uponor.com/en-gb