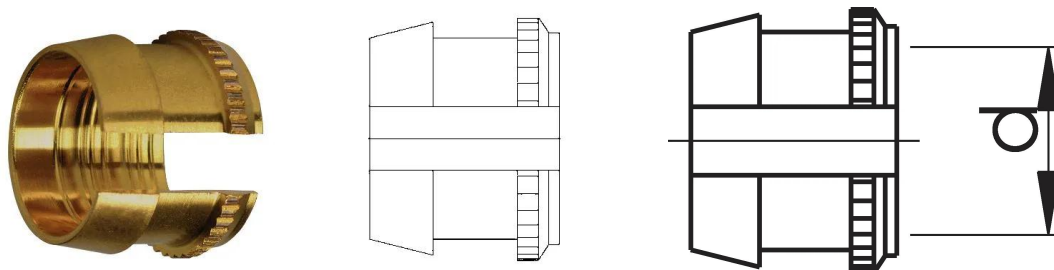


## GF Instaflex clamping ring 16

1151602

- Made of Brass



### About GF Instaflex clamping ring

#### Specification

- The system is subject to constant inspection by internal and external bodies.
- These inspections range from quality assurance during production to ISO certification
- for environmental and process safety. The INSTAFLEX system meets all the essential
- requirements for building technology applications and is subject to constant monitoring by the
- licensing offices for drinking water, heating and compressed air installations on land and sea.

#### Application

Instaflex offers complete solutions for single-family homes, multi-family residential buildings, healthcare, education, industrial, or commercial building

##### Application areas

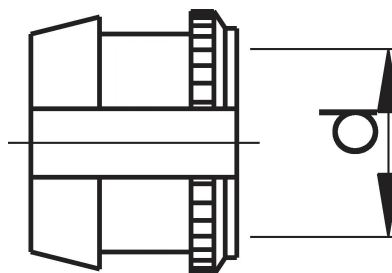
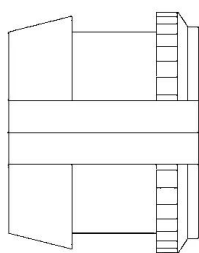
- hot & cold water, compressed air, cooling systems
- Surface and flush-mounted pipelines

#### Certification

- WRAS material approval (BS6920)

## GF Instaflex clamping ring 16

1151602



### Product code

Item no EAN	7611205816551
Item no GF	760853019
Item no GTIN	07611205816551

### Dimensions

Item Unit Height	16
Item Unit Length	22
Item Unit Weight	0,011
Item Unit Width	21
Item_UOM	pce

### Packaging

Packaging GTIN PL1	06414900063104
Packaging Height PL1	39
Packaging Length PL1	115
Packaging Quantity PL1	5
Packaging Type PL1	Plastic_Bag
Packaging Volume PL1	0,000183885
Packaging Weight PL1	0,072
Packaging Width PL1	41

### Technical documents

Download documents here

uponor UK

Blackmor Lane The Pavilion  
WD18 8GA, Watford  
UK

T +44 (0)1923 927000  
E enquiries.uk@uponor.com

[www.uponor.com/en-gb](http://www.uponor.com/en-gb)