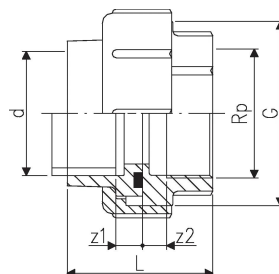
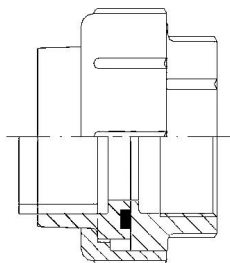


## GF Instaflex adapter FT 20-1/2"

1151833

- O-ring, EPDM



### About GF Instaflex adapter FT

#### Specification

- The system is subject to constant inspection by internal and external bodies.
- These inspections range from quality assurance during production to ISO certification
- for environmental and process safety. The INSTAFLEX system meets all the essential
- requirements for building technology applications and is subject to constant monitoring by the
- licensing offices for drinking water, heating and compressed air installations on land and sea.

#### Application

Instaflex offers complete solutions for single-family homes, multi-family residential buildings, healthcare, education, industrial, or commercial building

##### Application areas

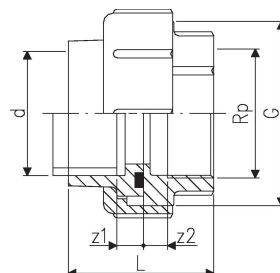
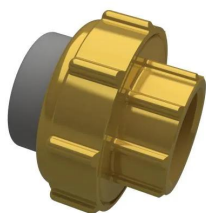
- hot & cold water, compressed air, cooling systems
- Surface and flush-mounted pipelines

#### Certification

- WRAS material approval (BS6920)

## GF Instaflex adapter FT 20-1/2"

1151833



### Product code

Item no EAN	7611205907600
Item no GF	760857163
Item no GTIN	07611205907600

### Dimensions

Item Unit Height	46
Item Unit Length	46
Item Unit Weight	0,219
Item Unit Width	46
Item_UOM	pce

### Measurements

LENGTH_L	47
z1	8
Z2	10

### Packaging

Packaging GTIN PL1	06414900063661
Packaging Height PL1	67
Packaging Length PL1	200
Packaging Quantity PL1	10
Packaging Type PL1	Plastic_Bag
Packaging Volume PL1	0,001876
Packaging Weight PL1	2,199
Packaging Width PL1	140

### Technical documents

Download documents here

[E-enquiries.uk@uponor.com](mailto:E-enquiries.uk@uponor.com)

[www.uponor.com/en-gb](http://www.uponor.com/en-gb)