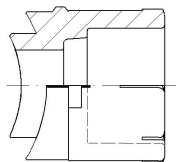
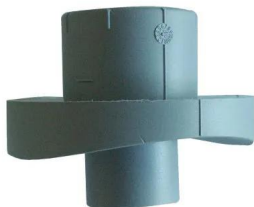


GF Instaflex weld-in-saddle Socket Fusion 50-20

1152228

- * on request



About GF Instaflex weld-in-saddle Socket Fusion

Specification

- The system is subject to constant inspection by internal and external bodies.
- These inspections range from quality assurance during production to ISO certification
- for environmental and process safety. The INSTAFLEX system meets all the essential
- requirements for building technology applications and is subject to constant monitoring by the
- licensing offices for drinking water, heating and compressed air installations on land and sea.

Application

Instaflex offers complete solutions for single-family homes, multi-family residential buildings, healthcare, education, industrial, or commercial building

Application areas

- hot & cold water, compressed air, cooling systems
- Surface and flush-mounted pipelines

Certification

- WRAS material approval (BS6920)

GF Instaflex weld-in-saddle Socket Fusion 50-20

1152228



Product code

Item no EAN	7611205899318
Item no GF	761068003
Item no GTIN	07611205899318

Dimensions

Item Unit Height	40
Item Unit Length	40
Item Unit Weight	0,011
Item Unit Width	40
Item_UOM	pce

Packaging

Packaging GTIN PL1	06414900111843
Packaging Height PL1	120
Packaging Length PL1	40
Packaging Quantity PL1	5
Packaging Type PL1	Plastic_Bag
Packaging Volume PL1	0,000384
Packaging Weight PL1	0,14
Packaging Width PL1	80

Measurements

Z Measurement h1	15
Z	11

Technical documents

Download documents here

T +44 (0)1923 927000
E enquiries.uk@uponor.com

www.uponor.com/en-gb