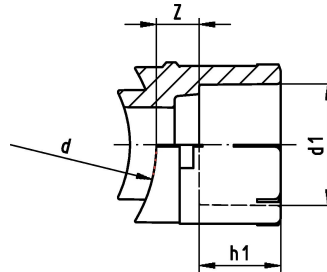
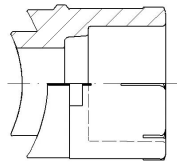
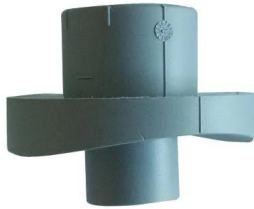


GF Instaflex weld-in-saddle Socket Fusion 50-25

1152229

- * on request



About GF Instaflex weld-in-saddle Socket Fusion

Specification

- The system is subject to constant inspection by internal and external bodies.
- These inspections range from quality assurance during production to ISO certification for environmental and process safety. The INSTAFLEX system meets all the essential requirements for building technology applications and is subject to constant monitoring by the licensing offices for drinking water, heating and compressed air installations on land and sea.

Application

Instaflex offers complete solutions for single-family homes, multi-family residential buildings, healthcare, education, industrial, or commercial building

Application areas

- hot & cold water, compressed air, cooling systems
- Surface and flush-mounted pipelines

Certification

- WRAS material approval (BS6920)

GF Instaflex weld-in-saddle Socket Fusion 50-25

1152229



Product code

Item no EAN	7611205899325
Item no GF	761068004
Item no GTIN	07611205899325

Dimensions

Item Unit Height	40
Item Unit Length	36
Item Unit Weight	0,014
Item Unit Width	38
Item_UOM	pce

Packaging

Packaging GTIN PL1	06414900111850
Packaging Height PL1	40
Packaging Length PL1	120
Packaging Quantity PL1	5
Packaging Type PL1	Plastic_Bag
Packaging Volume PL1	0,00036
Packaging Weight PL1	0,078
Packaging Width PL1	75

Measurements

Z Measurement h1	18
Z	11

Technical documents

Download documents here

T +44 (0)1923 927000
E enquiries.uk@uponor.com

www.uponor.com/en-gb