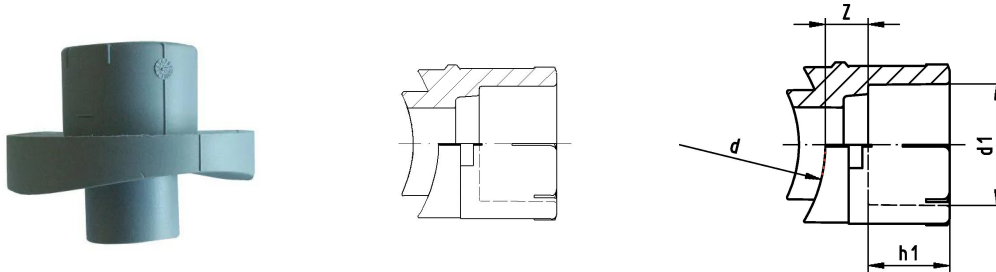


GF Instaflex weld-in-saddle Socket Fusion 63-32

1152233

- * on request



About GF Instaflex weld-in-saddle Socket Fusion

Specification

- The system is subject to constant inspection by internal and external bodies.
- These inspections range from quality assurance during production to ISO certification
- for environmental and process safety. The INSTAFLEX system meets all the essential
- requirements for building technology applications and is subject to constant monitoring by the
- licensing offices for drinking water, heating and compressed air installations on land and sea.

Application

Instaflex offers complete solutions for single-family homes, multi-family residential buildings, healthcare, education, industrial, or commercial building

Application areas

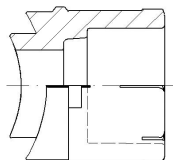
- hot & cold water, compressed air, cooling systems
- Surface and flush-mounted pipelines

Certification

- WRAS material approval (BS6920)

GF Instaflex weld-in-saddle Socket Fusion 63-32

1152233



Product code

Item no EAN	7611205899363
Item no GF	761068008
Item no GTIN	07611205899363

Dimensions

Item Unit Height	40
Item Unit Length	40
Item Unit Weight	0,022
Item Unit Width	40
Item_UOM	pce

Packaging

Packaging GTIN PL1	06414900131803
Packaging GTIN PL4	06414900131810
Packaging Height PL1	45
Packaging Height PL4	1050
Packaging Length PL1	130
Packaging Length PL4	1200
Packaging Quantity PL1	5
Packaging Quantity PL4	5400
Packaging Type PL1	Plastic_Bag
Packaging Type PL4	Pallet
Packaging Volume PL1	0,000468
Packaging Volume PL4	1,008
Packaging Weight PL1	0,118
Packaging Weight PL4	145,5
Packaging Width PL1	80
Packaging Width PL4	800

Measurements

Z Measurement h1

20

Z

11

Technical documents

Download documents here 

Uponor UK

Blackmor Lane The Pavilion
WD18 8GA, Watford
UK

T +44 (0)1923 927000
E enquiries.uk@uponor.com

www.uponor.com/en-gb