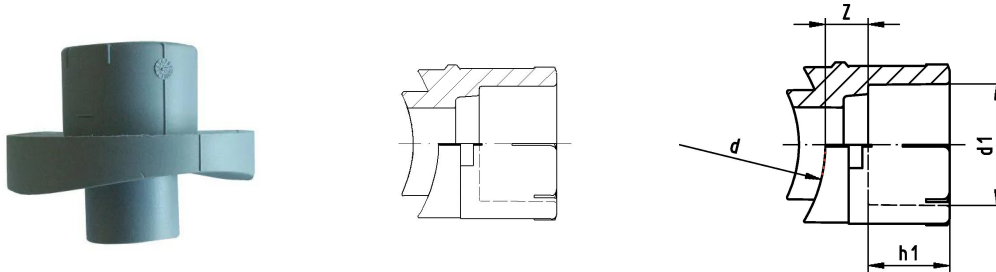


GF Instaflex weld-in-saddle Socket Fusion 90-20

1152237

- * on request



About GF Instaflex weld-in-saddle Socket Fusion

Specification

- The system is subject to constant inspection by internal and external bodies.
- These inspections range from quality assurance during production to ISO certification
- for environmental and process safety. The INSTAFLEX system meets all the essential
- requirements for building technology applications and is subject to constant monitoring by the
- licensing offices for drinking water, heating and compressed air installations on land and sea.

Application

Instaflex offers complete solutions for single-family homes, multi-family residential buildings, healthcare, education, industrial, or commercial building

Application areas

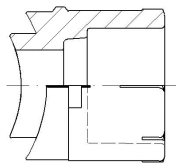
- hot & cold water, compressed air, cooling systems
- Surface and flush-mounted pipelines

Certification

- WRAS material approval (BS6920)

GF Instaflex weld-in-saddle Socket Fusion 90-20

1152237



Product code

Item no EAN	7611205899400
Item no GF	761068012
Item no GTIN	07611205899400

Dimensions

Item Unit Height	39
Item Unit Length	46
Item Unit Weight	0,018
Item Unit Width	45
Item_UOM	pce

Packaging

Packaging GTIN PL1	06414900131728
Packaging GTIN PL4	06414900131735
Packaging Height PL1	54
Packaging Height PL4	950
Packaging Length PL1	148
Packaging Length PL4	1200
Packaging Quantity PL1	5
Packaging Quantity PL4	7200
Packaging Type PL1	Plastic_Bag
Packaging Type PL4	Pallet
Packaging Volume PL1	0,000631368
Packaging Volume PL4	0,912
Packaging Weight PL1	0,098
Packaging Weight PL4	164
Packaging Width PL1	79
Packaging Width PL4	800

Measurements

Z Measurement h1

15

Z

13

Technical documents

Download documents here 

Uponor UK

Blackmor Lane The Pavilion
WD18 8GA, Watford
UK

T +44 (0)1923 927000
E enquiries.uk@uponor.com

www.uponor.com/en-gb