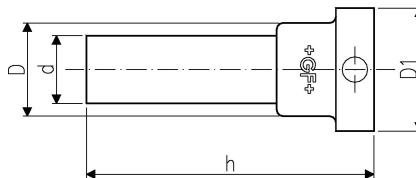


GF Instaflex flange adaptor flat d20

1152533

- Suitable to ball valve 546
- on request



About GF Instaflex flange adaptor flat

Specification

- The system is subject to constant inspection by internal and external bodies.
- These inspections range from quality assurance during production to ISO certification
- for environmental and process safety. The INSTAFLEX system meets all the essential
- requirements for building technology applications and is subject to constant monitoring by the
- licensing offices for drinking water, heating and compressed air installations on land and sea.

Application

Instaflex offers complete solutions for single-family homes, multi-family residential buildings, healthcare, education, industrial, or commercial building

Application areas

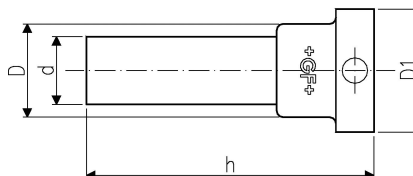
- hot & cold water, compressed air, cooling systems
- Surface and flush-mounted pipelines

Certification

- WRAS material approval (BS6920)

GF Instaflex flange adaptor flat d20

1152533



Product code

Item no EAN	7611205901004
Item no GF	761069627
Item no GTIN	07611205901004

Dimensions

Item Unit Height	37.9
Item Unit Length	86.888
Item Unit Weight	0,008
Item Unit Width	41.05
Item_UOM	pce

Packaging

Packaging GTIN PL1	06414900113182
Packaging Height PL1	10
Packaging Length PL1	150
Packaging Quantity PL1	1
Packaging Type PL1	Plastic_Bag
Packaging Volume PL1	0,00015
Packaging Weight PL1	0,039
Packaging Width PL1	100

Measurements

Z Measurement h	66
-----------------	----

Technical documents

Download documents here

UK

T +44 (0)1923 927000
E enquiries.uk@uponor.com

www.uponor.com/en-gb