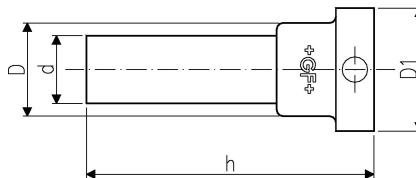


## GF Instaflex flange adaptor flat d25

**1152534**

- Suitable to ball valve 546
- on request



### About GF Instaflex flange adaptor flat

#### Specification

- The system is subject to constant inspection by internal and external bodies.
- These inspections range from quality assurance during production to ISO certification
- for environmental and process safety. The INSTAFLEX system meets all the essential
- requirements for building technology applications and is subject to constant monitoring by the
- licensing offices for drinking water, heating and compressed air installations on land and sea.

#### Application

Instaflex offers complete solutions for single-family homes, multi-family residential buildings, healthcare, education, industrial, or commercial building

##### Application areas

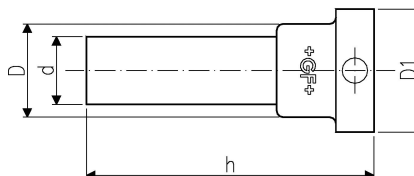
- hot & cold water, compressed air, cooling systems
- Surface and flush-mounted pipelines

#### Certification

- WRAS material approval (BS6920)

## GF Instaflex flange adaptor flat d25

1152534



### Product code

Item no EAN	7611205901011
Item no GF	761069628
Item no GTIN	07611205901011

### Dimensions

Item Unit Height	43
Item Unit Length	72
Item Unit Weight	0,025
Item Unit Width	44
Item_UOM	pce

### Packaging

Packaging GTIN PL1	06414900113199
Packaging Height PL1	51
Packaging Length PL1	141
Packaging Quantity PL1	1
Packaging Type PL1	Plastic_Bag
Packaging Volume PL1	0,000438651
Packaging Weight PL1	0,027
Packaging Width PL1	61

### Measurements

Z Measurement h	71
-----------------	----

### Technical documents

Download documents here

UK

T +44 (0)1923 927000  
E enquiries.uk@uponor.com

[www.uponor.com/en-gb](http://www.uponor.com/en-gb)