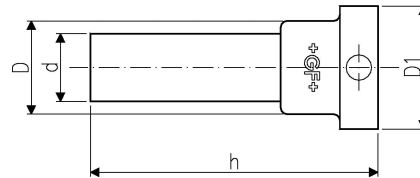


## GF Instaflex flange adaptor flat d40

**1152536**

- Suitable to ball valve 546
- on request



### About GF Instaflex flange adaptor flat

#### Specification

- The system is subject to constant inspection by internal and external bodies.
- These inspections range from quality assurance during production to ISO certification
- for environmental and process safety. The INSTAFLEX system meets all the essential
- requirements for building technology applications and is subject to constant monitoring by the
- licensing offices for drinking water, heating and compressed air installations on land and sea.

#### Application

Instaflex offers complete solutions for single-family homes, multi-family residential buildings, healthcare, education, industrial, or commercial building

##### Application areas

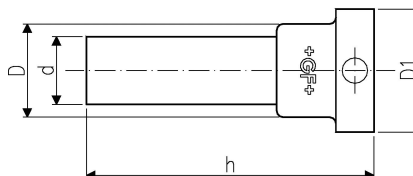
- hot & cold water, compressed air, cooling systems
- Surface and flush-mounted pipelines

#### Certification

- WRAS material approval (BS6920)

## GF Instaflex flange adaptor flat d40

1152536



### Product code

Item no EAN	7611205901035
Item no GF	761069630
Item no GTIN	07611205901035

### Dimensions

Item Unit Height	75.258
Item Unit Length	100.743
Item Unit Weight	0,027
Item Unit Width	109.246
Item_UOM	pce

### Packaging

Packaging GTIN PL1	06414900113212
Packaging Height PL1	80
Packaging Length PL1	115
Packaging Quantity PL1	1
Packaging Type PL1	Plastic_Bag
Packaging Volume PL1	0,001012
Packaging Weight PL1	0,037
Packaging Width PL1	110

### Measurements

Z Measurement h	82
-----------------	----

### Technical documents

[Download documents here](#)

UK

T +44 (0)1923 927000  
E enquiries.uk@uponor.com

[www.uponor.com/en-gb](http://www.uponor.com/en-gb)