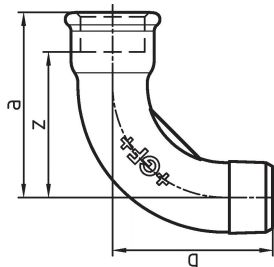


## GF Malleable Fittings long sweep bend 1 90deg 1/8 B

1152727

Long sweep bend 90°, ISO/EN G4



### About GF Malleable Fittings long sweep bend 1 90deg

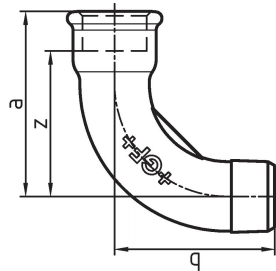
#### Specification

- With their extensive history and tradition, malleable cast iron fittings are the most common pipe fittings. Because of their durability and mechanical strength, these fittings are very popular. The material is able to endure high mechanical stress and when combined with the standardized jointing method can be used in a wide range of applications.


#### Application

- Sanitary, heating and gas installation, mechanical engineering (oil, cool pipework), construction of petrol stations (gas lines), sprinkler

## GF Malleable Fittings long sweep bend 1 90deg 1/8 B 1152727



### Technical documents

Download documents here 

#### Uponor UK

Blackmor Lane The Pavilion  
WD18 8GA, Watford  
UK

T +44 (0)1923 927000  
E [enquiries.uk@uponor.com](mailto:enquiries.uk@uponor.com)

[www.uponor.com/en-gb](http://www.uponor.com/en-gb)