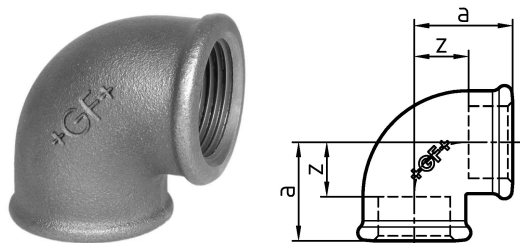


GF Malleable Fittings elbow 90 90deg 4 B

1152957

- Elbow 90°, equal, ISO/EN A1
- Female / female



About GF Malleable Fittings elbow 90 90deg

Specification

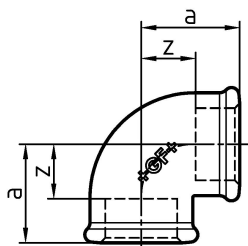
- Unique Whiteheart ductile Cast Iron to EN-GJMW-400-5 to BS EN 1562, design symbol A
- Thread type BSP - R or Rp to BS EN 10226-1 / ISO 7-1
- Union or flat-nut thread types to BS EN 228-1
- Manufactured to BS EN 10242 (ISO 49)
- Cast Iron is fire class A1 to BS EN 13501-1 (CWFT) acc. to Commission Decision 96/603/EC (as amended)
- Natural Black or Galvanized (99.995 zinc)
- Coated with medical-grade oil for corrosion protection
- Suitable for systems covered by the Pressure Equipment Safety Regulation:2016
- Max. pressure 25 bar up to 120 degrees, between 120-300 degrees use interpolated values, Max. 20bar at 300 degrees
- Sizes from ¼" to 4"

Application

- Heating - LTHW, MTHW and HTHW
- Steam
- Chilled water and cooling applications
- Compressed air
- Fuel gases
- Fuel oils
- Fire defence / sprinklers

GF Malleable Fittings elbow 90 90deg 4 B

1152957



Product code

Item no EAN	7611205307431
Item no GF	770090112
Item no GTIN	07611205307431
Item no LVI	0755034
Item no RSK	1270123
Item no VVS	004090116

Dimensions

Item Unit Height	135
Item Unit Length	164
Item Unit Weight	3,175
Item Unit Width	164
Item_UOM	pce

Packaging

Packaging GTIN PL1	07611205107437
Packaging GTIN PL4	06414900184335
Packaging Height PL1	200
Packaging Height PL4	729
Packaging Length PL1	385
Packaging Length PL4	1200
Packaging Quantity PL1	3
Packaging Quantity PL4	81
Packaging Type PL1	Base_Box
Packaging Type PL4	Pallet
Packaging Volume PL1	0,019635
Packaging Volume PL4	0,69984
Packaging Weight PL1	9,945
Packaging Weight PL4	277,175

Packaging Width PL1	255
Packaging Width PL4	800

Technical documents

Download documents here 

Uponor UK

Blackmor Lane The Pavilion
WD18 8GA, Watford
UK

T +44 (0)1923 927000
E enquiries.uk@uponor.com

www.uponor.com/en-gb