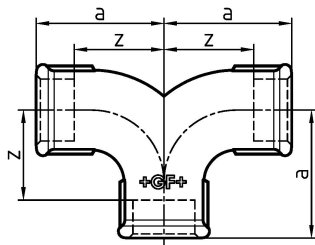


## GF Malleable Fittings 132 - twin elbow, galvanized 3/4

**1153563**

- Twin elbow, equal, ISO/EN E2



### About GF Malleable Fittings 132 - twin elbow, galvanized

#### Specification

- Unique Whiteheart ductile Cast Iron to EN-GJMW-400-5 to BS EN 1562, design symbol A
- Thread type BSP - R or Rp to BS EN 10226-1 / ISO 7-1
- Union or flat-nut thread types to BS EN 228-1
- Manufactured to BS EN 10242 (ISO 49)
- Cast Iron is fire class A1 to BS EN 13501-1 (CWFT) acc. to Commission Decision 96/603/EC (as amended)
- Natural Black or Galvanized (99.995 zinc)
- Coated with medical-grade oil for corrosion protection
- Suitable for systems covered by the Pressure Equipment Safety Regulation:2016
- Max. pressure 25 bar up to 120 degrees, between 120-300 degrees use interpolated values, Max. 20bar at 300 degrees
- Sizes from 1/4" to 4"

#### Application

- Heating - LTHW, MTHW and HTHW
- Steam
- Chilled water and cooling applications
- Compressed air
- Fuel gases
- Fuel oils
- Fire defence / sprinklers

## GF Malleable Fittings 132 - twin elbow, galvanized 3/4

1153563



### Status

Item Available From date

2025-09-05

### Product code

Item no EAN	7611205417222
Item no GF	770132205
Item no GTIN	07611205417222
Item no RSK	1280141
Item no VVS	004132406

### Dimensions

Item Unit Height	38
Item Unit Length	100
Item Unit Weight	0,3846
Item Unit Width	69
Item_UOM	pce

### Packaging

Packaging GTIN PL1	07611205217228
Packaging GTIN PL4	06414900126250
Packaging Height PL1	200
Packaging Height PL4	729
Packaging Length PL1	260
Packaging Length PL4	1200
Packaging Quantity PL1	30
Packaging Quantity PL4	1620
Packaging Type PL1	Base_Box
Packaging Type PL4	Pallet
Packaging Volume PL1	0,00988
Packaging Volume PL4	0,69984
Packaging Weight PL1	11,752

Packaging Weight PL4	643,052
Packaging Width PL1	190
Packaging Width PL4	800

## Measurements

Z Measurement a	50
Z Measurement a	50
Z Measurement d	3/4
Z	35

## Technical documents

[Download documents here](#) 

### Uponor UK

Blackmor Lane The Pavillion  
WD18 8GA, Watford  
UK

T +44 (0)1923 381212  
E  
customerservice.uk.bfs@georgfi  
scher.com