

GF Silenta 3A elbow 87,5° 90mm

1185529

- Light blue, PP-material with inorganic filler
- According to BS EN 1451



About GF Silenta 3A elbow 87,5°

Specification

- Manufactured with the latest generation of multilayer (three different layers) polypropylene technology
- System according to the requirements of BS EN 1451
- Application area B to BS EN 1451
- 15 db(A) at 4l/s - tested to BS EN 14366
- Fire class D - s2, d2 to BS EN 13501-1
- Pipe diameters from 32 mm to 200 mm
- Wide range of fittings to give complete design freedom
- For use with GF Silent Clamp range

Application

Applications:

Silenta 3A is suitable for various wastewater types and areas of use, including:

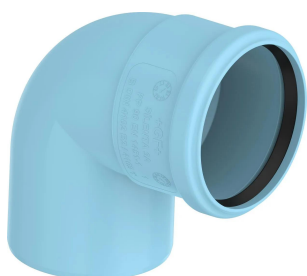
- High end residential, multi-family residential, hotels, healthcare, restaurants, etc
- Sustainable/green buildings
- Industrial facilities (short- and long-term use)
- Domestic sewage and rainwater
- Wastewater from kitchens, bathrooms, laundry rooms, toilets, and similar spaces

Commercial/Industrial Wastewater:

- For untreated wastewater containing harmful substances
- Guidance relating to chemical resistance of Polypropylene can be sought from ISO/TR 10358
- For full system chemical compatibility please contact GF
- Required details for assessment:
 - Substance composition
 - Concentration and pH values
 - Quantities and flow rates
 - Wastewater temperature

GF Silenta 3A elbow 87,5° 90mm

1185529



Status

Item Available From date 2026-03-01

Product code

Item no EAN 6414900269667

Item no GF 4704109030421

Item no GTIN 06414900269667

Item no RSK 2832167

Dimensions

Item Unit Height 154

Item Unit Length 158

Item Unit Weight 0,224

Item Unit Width 107

Item_UOM pce

Measurements

Length (l1) 47,7

Z Measurement d 90

Z Measurement d1 90,5

Z Measurement e 2,8

Packaging

Packaging GTIN PL1 06414900552646

Packaging GTIN PL2 06414900653312

Packaging Height PL1 154

Packaging Height PL2 360

Packaging Length PL1 158

Packaging Length PL2 590

Packaging Quantity PL1 1

Packaging Quantity PL2 32

Packaging Type PL1 Piece

Packaging Type PL2	Medium_Box
Packaging Volume PL1	0,002603524
Packaging Volume PL2	0,082836
Packaging Weight PL1	0,224
Packaging Weight PL2	8,5092
Packaging Width PL1	107
Packaging Width PL2	390

Technical documents

Download documents here 

Uponor UK

Blackmor Lane The Pavillion
WD18 8GA, Watford
UK

T +44 (0)1923 381212
E
customerservice.uk.bfs@georgfi
scher.com