

Concrete core activation České Budějovice Research Library



Uponor involvement

- ✓ Contec ON system 700 m² incl. underlay for concrete finish, 14x2.0 mm piping and Contec ON module. Main distribution pipelines PE-Xa 40 mm.

Concrete core activation České Budějovice Research Library

Heating and cooling using the Contec ON in The Research Library.

Heating and cooling of the new research library with the Contec ON concrete core activation system

Project Facts:

Location

České Budějovice, Czech Republic

Completion

2020

Building Type

Office

Product systems

Radiant Heating & Cooling

Project Type

New building

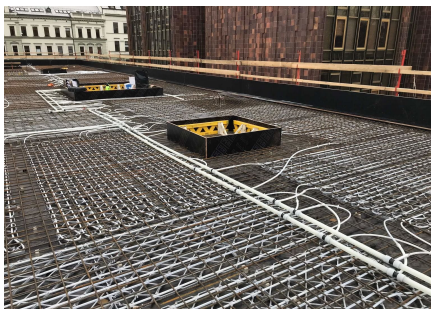
Partners

- ČIS ČB

Books require year-round indoor temperature

This building with a total ground area of 1,000 m² is equipped with the Contec ON concrete core activation system for year round temperature control of the interior climate within the required limits (between 20 and 26 °C summer/winter). Due to the options on offer, the entire system is fed from one place through ten outlets using PE-Xa 40 mm piping, to which separate modules for activation of the Contec ON system are connected by Tichelmann distributor. It is a one-storey building with a completely glazed façade without any shade whatsoever. With regard to these circumstances, a study was conducted using a 3D model with dynamic simulation of changing temperatures and burdens. The Contec ON system is capable of covering all temperature requirements all year round.

Concrete core activation České Budějovice Research Library





Address

Uponor UK
The Pavilion, Blackmoor Lane,
Watford, WD18 8GA

Phone 01923 381212

E-Mail

customerservice.uk.bfs@georgfischer.com

W www.uponor.com