

## Solidago Summer Resort



### Uponor involvement



350

## Solidago Summer Resort

The Solidago Summer Resort is in Calambrone, at the limit of the Natural Park of San Rossore Massaciuccoli, and faces directly on the shore.

### Project Facts:

#### Location

Calambrone (Pisa), Italy

#### Completion

2008

#### Building Type

Retail buildings

#### Product systems

Radiant Heating & Cooling, Local  
Heat Distribution

#### Address

via del Tirreno

#### Website

<http://www.villaggiosolidago.it>

#### Project Type

Renovation

## Partners

contractor

Gradassi srl Aretusa srl Bottoni srl

architect

Fabbro e Parisi

specifier

Ing Alessandro Baldi

installer

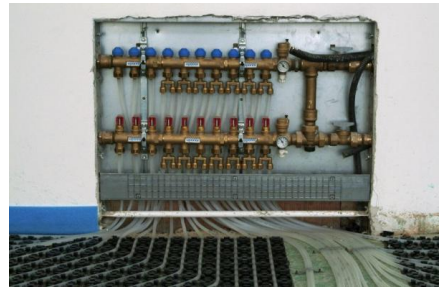
Martelli Termoidraulica srl

---

The Solidago Summer Resort is in Calambrone, at the limit of the Natural Park of San Rossore Massaciuccoli, and faces directly on the shore, next to famous and protected sand dunes, on which the Solidago blossoms, a typical yellow flower. The complex is only a few minutes drive from the historical centre of Pisa, from the Galilei International airport and the passenger port of Livorno. In a few minutes is thus possible to reach the most important cities in Tuscany and island of the Tuscan arcipelagus. The 130 apartments have precious services like a 70 metres swimming pool, a big restaurant, a bar, an ice cream parlour, parkings and big beach.

## Solidago Summer Resort





# +GF+

Address

Uponor UK  
The Pavilion, Blackmoor Lane,  
Watford, WD18 8GA

Phone 01923 381212

E-Mail

[customerservice.uk.bfs@georgfischer.com](mailto:customerservice.uk.bfs@georgfischer.com)

W [www.uponor.com](http://www.uponor.com)