

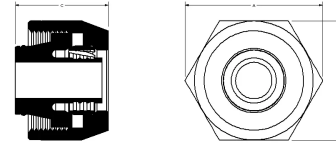
QS-style compression manifold fitting assemblies

Project Information

| | |
|--------------------------------|-----------------|
| Job name: | Location: |
| Engineer: | Date submitted: |
| Contractor: | Submitted by: |
| Manufacturer's representative: | Approved by: |

Technical data

| | |
|-------------------------|----------------------------------------------------------------------------------------------------------------|
| Material | Brass |
| Temp/pressure ratings | 73 °F (23 °C) at 160 psi (11 bar) 180 °F (82 °C) at 100 psi (6.9 bar) 200 °F (93 °C) at 80 psi (5.5 bar) |
| Prop 65 label required? | Yes |



Product information and application use

The Uponor R20 Compression Fitting Assembly threads onto manifold loop outlets. This R20 QS (Quick Seal) compression fitting connects Wirsbo hePEX™ or Uponor AquaPEX® tubing to the manifold in radiant heating applications and is designed for 5/16", 3/8", 1/2" or 5/8" tubing. The R25 QS compression fitting does not directly thread onto the manifold, but onto other R25 connections, and is designed for use with 5/8" and 3/4" tubing only.

| Part name | Part no. | A [inch] | B [inch] | C [inch] | Subcomponent Material | End Type 1 | End Type 2 | D [inch] | Cv | Equivalent length through [ft] | Weight per UOM [lbs/UOM] |
|--------------------------------------------------------------------------------|----------|----------|----------|----------|-----------------------|------------------|----------------|----------|------|--------------------------------|--------------------------|
| 5/16" QS-style Compression Fitting Assembly, R20 thread | A4020313 | 1.372 | 1.187 | 1.057 | Fitting: CA 360 Brass | QS 5/16" | ISO 228-G 3/4" | - | - | - | 0.26 |
| 3/8" QS-style Compression Fitting Assembly, R20 thread | A4020375 | 1.372 | 1.187 | 1.004 | Fitting: CA 360 Brass | QS 3/8" | ISO 228-G 3/4" | - | - | - | 0.23 |
| 1/2" QS-style Compression Fitting Assembly, R20 thread | A4020500 | 1.372 | 1.187 | 1.004 | Fitting: CA 360 Brass | QS 1/2" | ISO 228-G 3/4" | - | - | - | 0.21 |
| 5/8" QS-style Compression Fitting Assembly, R20 thread | A4020625 | 1.372 | 1.187 | 1.004 | Fitting: CA 360 Brass | QS 5/8" | ISO 228-G 3/4" | - | - | - | 0.19 |
| 5/8" QS-style Compression Fitting Assembly, R25 thread | A4030625 | 1.729 | 1.5 | 1.064 | Fitting: CA 360 Brass | QS 5/8" | ISO 228-G 1" | - | - | - | 0.4 |
| 3/4" QS-style Compression Fitting Assembly, R25 thread | A4020750 | 1.66 | 1.5 | 1.099 | Fitting: CA 360 Brass | QS 3/4" | ISO 228-G 1" | - | - | - | 0.33 |
| 5/8" QS-style Compression Fitting Assembly for Commercial Manifold, R25 thread | A4050625 | 1.729 | 1.5 | 1.217 | - | Compression 5/8" | ISO 228-G 1" | - | 6.58 | 4.56 | 0.4 |
| 3/4" QS-style Compression Fitting Assembly for Commercial Manifold, R25 thread | A4050750 | 1.66 | 1.5 | 1.221 | - | Compression 3/4" | ISO 228-G 1" | - | 8.08 | 7.12 | 0.4 |

| Part name | Part no. | Codes | Standards | Listings |
|---------------------------------------------------------------------------------|----------|---------------------------|-------------------------------|----------------------------|
| QS-style compression manifold fitting assemblies | All | IMC IRC NBC of Canada UMC | CSA B137.5 ASTM F877 | cNSFus-rfh ICC-ES-PMG 1012 |
| In addition, the following parts have additional codes, standards, or listings: | | | | |
| 5/16" QS-style Compression Fitting Assembly, R20 thread | A4020313 | | R32: ISO 228-G 3/4" | |
| 3/8" QS-style Compression Fitting Assembly, R20 thread | A4020375 | | R32: ISO 228-G 3/4" | |
| 1/2" QS-style Compression Fitting Assembly, R20 thread | A4020500 | | R32: ISO 228-G 3/4" | |
| 5/8" QS-style Compression Fitting Assembly, R20 thread | A4020625 | | R32: ISO 228-G 3/4" | |
| 5/8" QS-style Compression Fitting Assembly, R25 thread | A4030625 | | R32: ISO 228-G 1" | |
| 3/4" QS-style Compression Fitting Assembly, R25 thread | A4020750 | | R32: ISO 228-G 1" | |
| 5/8" QS-style Compression Fitting Assembly for Commercial Manifold, R25 thread | A4050625 | | R25: ISO 228-G 1" NSF/ANSI 14 | IAPMO-ES ICC PMG 1006 |
| 3/4" QS-style Compression Fitting Assembly for Commercial Manifold, R25 thread | A4050750 | | R25: ISO 228-G 1" NSF/ANSI 14 | IAPMO-ES ICC PMG 1006 |

| Installation | Related applications |
|----------------------------------------------------------------------------------------------------------------------------------------------------------------------------------------------------------------------------------------------------------------------------------------------------------|-----------------------------------------------------------------------------------------------------------------------------------------------------------------|
| The R20-threaded Compression Fitting connects to Uponor manifold loop outlets. The compression end enables direct connection to Wirsbo hePEX tubing. Use the R25-threaded Compression Fitting for other R25 connections. For more information, refer to the Radiant Floor Heating Installation Handbook. | <ul style="list-style-type: none"> Radiant Heating and Cooling Systems Permafrost Protection Systems Turf Conditioning Systems |

| Footnotes | Contact information |
|-----------|---------------------------------------------------------------------------------------------------------------------------------------------------------------------------------------------------------------------------|
| - | <p>Uponor Inc. 5925 148th Street West Apple Valley, MN 55124 T 800.321.4739 F 952.891.2008</p> <p>Uponor Ltd. 6510 Kennedy Road Mississauga, ON L5T 2X4 T 888.594.7726 F 800.638.9517</p> |