

QS-style copper fitting adapters

Project Information

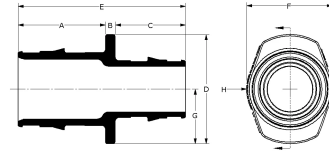
Job name:	Location:
Engineer:	Date submitted:
Contractor:	Submitted by:
Manufacturer's representative:	Approved by:

Technical data

Material	Brass
Temp/pressure ratings	73 °F (23 °C) at 160 psi (11 bar) 180 °F (82 °C) at 100 psi (6.9 bar) 200 °F (93 °C) at 80 psi (5.5 bar)
Prop 65 label required?	Yes

Product information and application use

The Uponor QS-style Copper Adapters, combined with the appropriate QS-style Fitting Assembly, transition Wirsbo hePEX™ tubing to 1/2", 3/4" or 1" copper pipe in hydronic heating applications



Part name	Part no.	A [Inch]	B [Inch]	C [Inch]	D [Inch]	E [Inch]	F [Inch]	G [Inch]	H [Inch]	End Type 1	End Type 2
QS-style Copper Fitting Adapter, R20 x 1/2" Copper	A4342050	0.601	0.275	0.512	1.224	1.388	1.063	0.612	0.531	ISO 228-G 3/4"	Sweat 1/2"
QS-style Copper Fitting Adapter, R20 x 3/4" Copper	A4342075	0.85	0.275	0.512	1.224	1.637	1.063	0.612	0.531	ISO 228-G 3/4"	Sweat 3/4"
QS-style Copper Fitting Adapter, R25 X 1" Copper (for 3/4" and 5/8" tubing only)	A4342510	0.97	0.299	0.658	1.585	1.927	1.375	0.792	0.687	ISO 228-G 1"	Sweat 1"
QS-style Copper Fitting Adapter, R25 X 3/4" Copper (for 3/4" and 5/8" tubing only)	A4342575	0.935	0.3	0.657	1.557	1.892	1.375	0.778	0.687	ISO 228-G 1"	Sweat 3/4"

Part name	Part no.	Weight per UOM [lbs/UOM]
QS-style Copper Fitting Adapter, R20 x 1/2" Copper	A4342050	0.15
QS-style Copper Fitting Adapter, R20 x 3/4" Copper	A4342075	0.18
QS-style Copper Fitting Adapter, R25 X 1" Copper (for 3/4" and 5/8" tubing only)	A4342510	0.29
QS-style Copper Fitting Adapter, R25 X 3/4" Copper (for 3/4" and 5/8" tubing only)	A4342575	0.28

Part name	Part no.	Codes	Standards	Listings
QS-style copper fitting adapters	All	-	ASTM F877 R20:	-
In addition, the following parts have additional codes, standards, or listings:				
QS-style Copper Fitting Adapter, R25 X 1" Copper (for 3/4" and 5/8" tubing only)	A4342510		R25:	
QS-style Copper Fitting Adapter, R25 X 3/4" Copper (for 3/4" and 5/8" tubing only)	A4342575		R25:	

Installation

The corresponding compression fitting threads onto the R20 or R25 thread to adapt to copper. For additional information, refer to the Uponor Radiant Floor Heating Installation Handbook.

Related applications

- Radiant Heating and Cooling Systems
- Permafrost Protection Systems
- Turf Conditioning Systems

Uponor Inc.
5925 148th Street West
Apple Valley, MN 55124
T 800.321.4739
F 952.891.2008

Uponor Ltd.
6510 Kennedy Road
Mississauga, ON L5T 2X4
T 888.594.7726
F 800.638.9517
