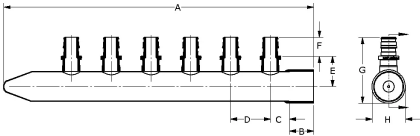


ProPEX (type L) copper branch manifolds

| Project information | |
|--------------------------------|-----------------|
| Job name: | Location: |
| Engineer: | Date submitted: |
| Contractor: | Submitted by: |
| Manufacturer's representative: | Approved by: |

| Technical data | |
|-------------------------|--|
| Material | Copper |
| Subcomponent Material | Copper, LF Brass |
| Manifold size | 1 inch |
| End type 1 | ProPEX 1/2" |
| End type 2 | Sweat 1" |
| Temp/pressure ratings | 73 °F (23 °C) at 160 psi (11 bar) 180 °F (82 °C) at 100 psi (6.9 bar) 200 °F (93 °C) at 80 psi (5.5 bar) 210 °F (99 °C) at 149 psi (10.3 bar) |
| Max. fluid flow rate | 21 gpm |
| Prop 65 label required? | Yes |

| Product information and application use | |
|---|--|
|---|--|



The Uponor 1" Copper Branch Manifold with 1/2" ProPEX® Lead-free (LF) Outlets is used for hot and cold domestic potable-water distribution systems. The manifold has a 1" copper sweat fitting adapter supply connection. All outlets are configured with 1/2" ProPEX LF brass connections.

This product is made to order, please contact [customer service](#) for lead time.

Note: Temperature and pressure ratings stated are hydrostatic ratings. For domestic hot-water (DHW) and DHW recirculation installations, operating conditions should not exceed 140°F (60°C) at 80 psi (5.5 bar) in accordance with ASTM F2023. For additional information regarding application-specific temperature and pressure ratings, refer to the Uponor PEX Piping Systems Design and Installation Manual.

| Part name | Part no. | Codes | Standards | Listings |
|---|----------|--|---|--|
| ProPEX (type L) copper branch manifolds | All | UPC IBC IRC IPC NPC of Canada NSPC IMC | NSF-372 ASTM F877 ASTM F1960 CSA B137.5 NSF-61 NSF-14 | IAPMO-ES ICC-ES-PMG cNSFus-pw-G U.P.Code |

| Installation | Related applications |
|---|--|
| Use any product designed to mount 1" copper pipe as a mounting bracket. Any bend within 6 inches of the ProPEX connection to the manifold requires the use of a Tube Talon (F7050750) or Bend Support (A5110500 and A5150500). Refer to the Uponor Commercial Piping Pocket Guide, Uponor AquaSAFE™ Residential Fire Sprinkler Installation Guide or the Uponor Radiant Installation Handbook for additional information. | PEX-a Plumbing Systems Residential fire safety systems Radiant Heating and Cooling Systems |

| Notes |
|-------|
|-------|

Maximum Flow Rate at 5 fps: 12.8 gpm
Maximum Flow Rate at 8 fps: 20.5 gpm

| Footnotes | Contact information |
|-----------|--|
| - | Uponor Inc. 5925 148th Street West Apple Valley, MN 55124 T 800.321.4739 F 952.891.2008 Uponor Ltd. 6510 Kennedy Road Mississauga, ON L5T 2X4 T 888.594.7726 F 800.638.9517 |