

ProPEX lead-free (LF) copper straight stubs

Project Information

| | |
|--------------------------------|-----------------|
| Job name: | Location: |
| Engineer: | Date submitted: |
| Contractor: | Submitted by: |
| Manufacturer's representative: | Approved by: |

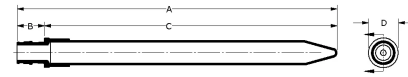
Technical data

| | |
|-------------------------|--|
| Material | Copper |
| Temp/pressure ratings | 73 °F (23 °C) at 160 psi (11 bar) 180 °F (82 °C) at 100 psi (6.9 bar) 200 °F (93 °C) at 80 psi (5.5 bar) |
| Prop 65 label required? | Yes |

Product information and application use

ProPEX® Lead-free (LF) Copper Straight Stub transitions Uponor PEX tubing to copper pipe for use in hot and cold domestic potable water systems and hydronic radiant heating and cooling systems. The transition fitting can be used for direct transition to copper sweat, copper press and roll-groove applications. The transition fitting is safe for direct burial in soil.

Note: Temperature and pressure ratings stated are hydrostatic ratings. For domestic hot-water (DHW) and DHW recirculation installations, operating conditions should not exceed 140°F (60°C) at 80 psi (5.5 bar) in accordance with ASTM F2023. For additional information regarding application-specific temperature and pressure ratings, refer to the Uponor PEX Piping Systems Design and Installation Manual.



| Part name | Part no. | A [inch] | B [inch] | C [inch] | D [inch] | Weight per UOM [lbs/UOM] | End Type 1 | End Type 2 |
|---|-----------|----------|----------|----------|----------|--------------------------|---------------|--------------|
| ProPEX LF Copper Straight Stub, 1/2" PEX LF Brass x 1/2" Copper (8") | LF2935050 | 8.3 | 0.709 | 7.592 | 0.77 | 0.22 | ProPEX 1/2" | Copper 1/2" |
| ProPEX LF Copper Straight Stub, 1/2" PEX LF Brass x 1/2" Copper (15") | LF2945050 | 14.5 | 0.709 | 13.792 | 0.77 | 0.4 | ProPEX 1/2" | Copper 1/2" |
| ProPEX LF Copper Straight Stub, 2 1/2" PEX LF Brass x 2 1/2" Copper | LF2962525 | 12.11 | 2.83 | 9.28 | 3.36 | 3.7 | ProPEX 2-1/2" | Sweat 2-1/2" |
| ProPEX LF Copper Straight Stub, 3" PEX LF Brass x 3" Copper | LF2963030 | 13.67 | 3.38 | 10.29 | 3.79 | 5.5 | ProPEX 3" | Sweat 3" |

Installation

Use the appropriate Uponor ProPEX Ring for the tubing (sold separately). Do not solder within 18 inches of the ProPEX fitting. Refer to the Uponor AquaPEX® Professional Plumbing Installation Guide or Uponor Hydronic Piping Design Assistance Manual for additional information.

Related applications

- PEX-a Plumbing Systems
- Hydronic Radiant Heating and Cooling Systems
- Snow Melting Systems
- Turf Conditioning Systems
- Permafrost Prevention Systems

Codes

UPC|IBC|IRC|IPC|NPC of Canada|UMC|NSPC|IMC

Standards

NSF-372|ASTM F877|ASTM F1960|CSA B137.5|NSF-61|NSF-14

Listings

IAPMO-ES|ICC-ES-PMG|cNSFus-pw-G|U.P.Code*

Footnotes

-
* Some SKUs in this family have additional codes, standards, or listings. Please see uponor.com for complete information.

Contact information

Uponor Inc.
5925 148th Street West
Apple Valley, MN 55124
T 800.321.4739
F 952.891.2008

Uponor Ltd.
6510 Kennedy Road
Mississauga, ON L5T 2X4
T 888.594.7726
F 800.638.9517