

ProPEX lead-free (LF) brass sweat fitting adapters

Project Information

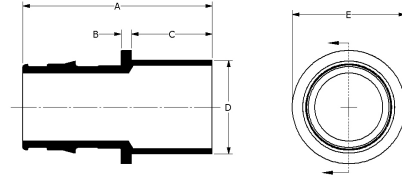
Job name:	Location:
Engineer:	Date submitted:
Contractor:	Submitted by:
Manufacturer's representative:	Approved by:

Technical data

Material	LF Brass
Temp/pressure ratings	73 °F (23 °C) at 160 psi (11 bar) 180 °F (82 °C) at 100 psi (6.9 bar) 200 °F (93 °C) at 80 psi (5.5 bar)
Prop 65 label required?	Yes

Product information and application use

ProPEX® lead-free (LF) brass fitting adapters transition PEX tubing to copper fittings. These adapters are approved for use in hot and cold domestic potable water systems and hydronic radiant heating systems. One end of the adapter is manufactured with an Uponor ProPEX fitting for connections to Wirsbo hePEX™ tubing or Uponor AquaPEX® tubing. These adapters are safe for direct burial in soil.



Part name	Part no.	A [inch]	B [inch]	C [inch]	D [inch]	E [inch]	F [inch]	G [inch]	Weight per UOM [lbs/UOM]	Equivalent length branch [ft]	Equivalent length through [ft]
ProPEX LF Brass Sweat Fitting Adapter, 1" PEX x 1" Copper	LF4501010	2.276	0.125	0.97	1.126	1.36	0.563	1.181	0.19	-	-
ProPEX LF Brass Sweat Fitting Adapter, 1 1/4" PEX x 1 1/4" Copper	LF4501313	2.6	0.125	1.03	1.374	1.64	0.687	1.445	0.4	-	-
ProPEX LF Brass Sweat Fitting Adapter, 1 1/2" PEX x 1 1/2" Copper	LF4501515	2.989	0.125	1.16	1.624	1.85	0.812	1.704	0.5	-	-
ProPEX LF Brass Sweat Fitting Adapter, 2" PEX x 2" Copper	LF4502020	3.807	0.25	1.41	2.124	2.6	1.062	2.147	0.8	-	-
ProPEX LF Brass Sweat Fitting Adapter, 1/2" PEX x 1/2" Copper	LF4505050	1.394	0.125	0.56	0.624	0.77	0.312	0.709	0.06	-	-
ProPEX LF Brass Sweat Fitting Adapter, 1/2" PEX x 3/4" Copper	LF4505075	1.644	0.125	0.81	0.874	0.916	0.437	0.709	0.08	-	-
ProPEX LF Brass Sweat Fitting Adapter, 3/4" PEX x 1" Copper	LF4507510	2.04	0.125	0.97	1.124	1.17	0.562	0.945	0.14	-	-
ProPEX LF Brass Sweat Fitting Adapter, 3/4" PEX x 1/2" Copper	LF4507550	1.63	0.125	0.56	0.624	1.1	0.312	0.945	0.09	-	-
ProPEX LF Brass Sweat Fitting Adapter, 3/4" PEX x 3/4" Copper	LF4507575	1.88	0.125	0.81	0.874	1.1	0.437	0.945	0.12	-	-

Part name	Part no.	End Type 1	End Type 2
ProPEX LF Brass Sweat Fitting Adapter, 1" PEX x 1" Copper	LF4501010	ProPEX 1"	Sweat 1"
ProPEX LF Brass Sweat Fitting Adapter, 1 1/4" PEX x 1 1/4" Copper	LF4501313	ProPEX 1-1/4"	Sweat 1-1/4"
ProPEX LF Brass Sweat Fitting Adapter, 1 1/2" PEX x 1 1/2" Copper	LF4501515	ProPEX 1-1/2"	Sweat 1-1/2"
ProPEX LF Brass Sweat Fitting Adapter, 2" PEX x 2" Copper	LF4502020	ProPEX 2"	Sweat 2"
ProPEX LF Brass Sweat Fitting Adapter, 1/2" PEX x 1/2" Copper	LF4505050	ProPEX 1/2"	Sweat 1/2"
ProPEX LF Brass Sweat Fitting Adapter, 1/2" PEX x 3/4" Copper	LF4505075	ProPEX 1/2"	Sweat 3/4"
ProPEX LF Brass Sweat Fitting Adapter, 3/4" PEX x 1" Copper	LF4507510	ProPEX 3/4"	Sweat 1"
ProPEX LF Brass Sweat Fitting Adapter, 3/4" PEX x 1/2" Copper	LF4507550	ProPEX 3/4"	Sweat 1/2"
ProPEX LF Brass Sweat Fitting Adapter, 3/4" PEX x 3/4" Copper	LF4507575	ProPEX 3/4"	Sweat 3/4"

Installation	Related applications			
<p>ProPEX tool and ProPEX rings (sold separately) are required for connecting the PEX tubing. Do not solder within 18" of ProPEX fittings. For more information, refer to the AquaPEX Professional Plumbing Installation Guide or Radiant Floor Heating Installation Handbook.</p>	<p>PEX-a Plumbing Systems Radiant Heating and Cooling Systems Permafrost Protection Systems Turf Conditioning Systems</p>			
Codes	Standards	Listings		
UPC IBC IRC IPC NPC of Canada UMC USEHC NSPC IMC	NSF-372 ASTM F877 ASTM F1960 CSA B137.5 NSF-61 NSF-14	HUD MR 1269 ICC-ES-PMG cNSFus-pw-G U.P.Code		
Footnotes	Contact information			
-	<table border="0"> <tr> <td data-bbox="906 387 1246 512"> Uponor Inc. 5925 148th Street West Apple Valley, MN 55124 T 800.321.4739 F 952.891.2008 </td> <td data-bbox="1246 387 1567 512"> Uponor Ltd. 6510 Kennedy Road Mississauga, ON L5T 2X4 T 888.594.7726 F 800.638.9517 </td> </tr> </table>		Uponor Inc. 5925 148th Street West Apple Valley, MN 55124 T 800.321.4739 F 952.891.2008	Uponor Ltd. 6510 Kennedy Road Mississauga, ON L5T 2X4 T 888.594.7726 F 800.638.9517
Uponor Inc. 5925 148th Street West Apple Valley, MN 55124 T 800.321.4739 F 952.891.2008	Uponor Ltd. 6510 Kennedy Road Mississauga, ON L5T 2X4 T 888.594.7726 F 800.638.9517			