

ProPEX lead-free (LF) brass sweat fitting adapters

Project information

Job name:	Location:
Engineer:	Date submitted:
Contractor:	Submitted by:
Manufacturer's representative:	Approved by:

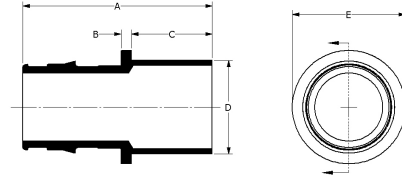
Technical data

Material	LF Brass
Temp/pressure ratings	73 °F (23 °C) at 160 psi (11 bar) 180 °F (82 °C) at 100 psi (6.9 bar) 200 °F (93 °C) at 80 psi (5.5 bar)
Prop 65 label required?	Yes

Product information and application use

ProPEX® lead-free (LF) brass fitting adapters transition PEX tubing to copper fittings. These adapters are approved for use in hot and cold domestic potable water systems and hydronic radiant heating systems. One end of the adapter is manufactured with an Uponor ProPEX fitting for connections to Wirsbo hePEX™ tubing or Uponor AquaPEX® tubing. These adapters are safe for direct burial in soil.

Note: Temperature and pressure ratings stated are hydrostatic ratings. For domestic hot-water (DHW) and DHW recirculation installations, operating conditions should not exceed 140°F (60°C) at 80 psi (5.5 bar) in accordance with ASTM F2023. For additional information regarding application-specific temperature and pressure ratings, refer to the Uponor PEX Piping Systems Design and Installation Manual.



Part name	Part no.	A [inch]	B [inch]	C [inch]	D [inch]	E [inch]	F [inch]	G [inch]	Weight per UOM [lbs/UOM]
ProPEX LF Brass Sweat Fitting Adapter, 1/2" PEX x 1/2" Copper	LF4505050	1.394	0.125	0.56	0.624	0.77	0.312	0.709	0.06
ProPEX LF Brass Sweat Fitting Adapter, 1/2" PEX x 3/4" Copper	LF4505075	1.644	0.125	0.81	0.874	0.916	0.437	0.709	0.08
ProPEX LF Brass Sweat Fitting Adapter, 3/4" PEX x 1/2" Copper	LF4507550	1.63	0.125	0.56	0.624	1.1	0.312	0.945	0.09
ProPEX LF Brass Sweat Fitting Adapter, 3/4" PEX x 3/4" Copper	LF4507575	1.88	0.125	0.81	0.874	1.1	0.437	0.945	0.12
ProPEX LF Brass Sweat Fitting Adapter, 1" PEX x 1" Copper	LF4501010	2.276	0.125	0.97	1.126	1.36	0.563	1.181	0.19
ProPEX LF Brass Sweat Fitting Adapter, 1 1/4" PEX x 1 1/4" Copper	LF4501313	2.6	0.125	1.03	1.374	1.64	0.687	1.445	0.4
ProPEX LF Brass Sweat Fitting Adapter, 1 1/2" PEX x 1 1/2" Copper	LF4501515	2.989	0.125	1.16	1.624	1.85	0.812	1.704	0.5
ProPEX LF Brass Sweat Fitting Adapter, 2" PEX x 2" Copper	LF4502020	3.807	0.25	1.41	2.124	2.6	1.062	2.147	0.8
ProPEX LF Brass Sweat Fitting Adapter, 3/4" PEX x 1" Copper	LF4507510	2.04	0.125	0.97	1.124	1.17	0.562	0.945	0.14

Part name	Part no.	Codes	Standards	Listings
ProPEX lead-free (LF) brass sweat fitting adapters	All	UPC IBC IRC IPC NPC of Canada UMC USEHC NSPC IMC	NSF-372 ASTM F877 ASTM F1960 CSA B137.5 NSF-61 NSF-14	HUD MR 1269 ICC-ES-PMG cNSFus-pw-G U.P.Code

Installation

ProPEX tool and ProPEX rings (sold separately) are required for connecting the PEX tubing. Do not solder within 18" of ProPEX fittings. For more information, refer to the AquaPEX Professional Plumbing Installation Guide or Radiant Floor Heating Installation Handbook.

Related applications

- PEX-a Plumbing Systems
- Radiant Heating and Cooling Systems
- Permafrost Protection Systems
- Turf Conditioning Systems

Footnotes

-

Contact information

Uponor Inc.
5925 148th Street West
Apple Valley, MN 55124
T 800.321.4739
F 952.891.2008

Uponor Ltd.
6510 Kennedy Road
Mississauga, ON L5T 2X4
T 888.594.7726
F 800.638.9517