

ProPEX lead-free (LF) brass male threaded adapters

Project information

Job name:	Location:
Engineer:	Date submitted:
Contractor:	Submitted by:
Manufacturer's representative:	Approved by:

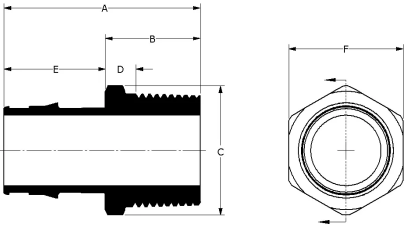
Technical data

Material	LF Brass
Temp/pressure ratings	73 °F (23 °C) at 160 psi (11 bar) 180 °F (82 °C) at 100 psi (6.9 bar) 200 °F (93 °C) at 80 psi (5.5 bar)
Prop 65 label required?	Yes

Product information and application use

ProPEX® lead-free (LF) brass male threaded adapters connect Uponor PEX tubing to male NPT threads for use in hot and cold domestic potable water systems, residential fire safety and hydronic radiant heating and cooling systems. These adapters are safe for direct burial in soil.

Note: Temperature and pressure ratings stated are hydrostatic ratings. For domestic hot-water (DHW) and DHW recirculation installations, operating conditions should not exceed 140°F (60°C) at 80 psi (5.5 bar) in accordance with ASTM F2023. For additional information regarding application-specific temperature and pressure ratings, refer to the Uponor PEX Piping Systems Design and Installation Manual.



Part name	Part no.	A [inch]	B [inch]	C [inch]	D [inch]	E [inch]	F [inch]	G [inch]	Cv	Equivalent length through [ft]	End Type 1
ProPEX LF Brass Male Threaded Adapter, 3/4" PEX x 3/4" NPT	LF4527575	1.945	1	1.196	0.454	0.945	1.07	0.598	11.3	2.7	ProPEX 3/4"
ProPEX LF Brass Male Threaded Adapter, 1" PEX x 1" NPT	LF4521010	2.286	1.105	1.502	0.422	1.181	1.335	0.751	19.9	3.2	ProPEX 1"
ProPEX LF Brass Male Threaded Adapter, 1 1/4" PEX x 1 1/4" NPT	LF4521313	2.55	1.105	1.925	0.398	1.445	1.68	0.963	32.4	4.2	ProPEX 1-1/4"
ProPEX LF Brass Male Threaded Adapter, 1/2" PEX x 1/2" NPT	LF4525050	1.639	0.93	0.963	0.396	0.709	0.86	0.481	5	2.3	ProPEX 1/2"
ProPEX LF Brass Male Threaded Adapter, 3/4" PEX x 1" NPT	LF4527510	2.045	1.1	1.511	0.417	0.945	1.335	0.756	10.9	3.4	ProPEX 3/4"
ProPEX LF Brass Male Threaded Adapter, 1" PEX x 3/4" NPT	LF4521075	2.201	1.02	1.404	0.474	1.181	1.25	0.702	17.8	1.2	ProPEX 1"
ProPEX LF Brass Male Threaded Adapter, 1 1/2" PEX x 1 1/2" NPT	LF4521515	2.854	1.15	2.167	0.426	1.704	1.92	1.083	39.3	5.5	ProPEX 1-1/2"
ProPEX LF Brass Male Threaded Adapter, 2" PEX x 2" NPT	LF4522020	3.543	1.396	2.6	0.639	2.147	2.375	1.3	78.6	5.61	ProPEX 2"
ProPEX LF Brass Male Threaded Adapter, 1/2" PEX x 3/4" NPT	LF4525075	1.639	0.93	1.206	0.384	0.709	1.07	0.603	6.2	-	ProPEX 1/2"
ProPEX LF Brass Male Threaded Adapter, 2 1/2" PEX x 2 1/2" NPT	LF4522525	4.83	2	3.279	0.863	2.83	2.9	1.639	227.3	1.5	ProPEX 2-1/2"
ProPEX LF Brass Male Threaded Adapter, 3" PEX x 3" NPT	LF4523030	5.38	2	3.994	0.8	3.38	3.52	1.997	187.5	9.1	ProPEX 3"
ProPEX LF Brass Male Threaded Adapter, 3/8" PEX x 1/2" NPT	LF4523850	1.521	0.93	0.963	0.396	0.591	0.86	0.481	5	2.3	ProPEX 3/8"

Part name	Part no.	End Type 2	Weight per UOM [lbs/UOM]
ProPEX LF Brass Male Threaded Adapter, 3/4" PEX x 3/4" NPT	LF4527575	MNPT 3/4"	0.2
ProPEX LF Brass Male Threaded Adapter, 1" PEX x 1" NPT	LF4521010	MNPT 1"	0.38
ProPEX LF Brass Male Threaded Adapter, 1 1/4" PEX x 1 1/4" NPT	LF4521313	MNPT 1-1/4"	0.62
ProPEX LF Brass Male Threaded Adapter, 1/2" PEX x 1/2" NPT	LF4525050	MNPT 1/2"	0.12
ProPEX LF Brass Male Threaded Adapter, 3/4" PEX x 1" NPT	LF4527510	MNPT 1"	0.32
ProPEX LF Brass Male Threaded Adapter, 1" PEX x 3/4" NPT	LF4521075	MNPT 3/4"	0.26
ProPEX LF Brass Male Threaded Adapter, 1 1/2" PEX x 1	LF4521515	MNPT 1-1/2"	0.8

1/2" NPT				
ProPEX LF Brass Male Threaded Adapter, 2" PEX x 2" NPT	LF4522020	MNPT 2"	1.45	
ProPEX LF Brass Male Threaded Adapter, 1/2" PEX x 3/4" NPT	LF4525075	MNPT 3/4"	-	
ProPEX LF Brass Male Threaded Adapter, 2 1/2" PEX x 2 1/2" NPT	LF4522525	MNPT 2-1/2"	3.1	
ProPEX LF Brass Male Threaded Adapter, 3" PEX x 3" NPT	LF4523030	MNPT 3"	4.9	
ProPEX LF Brass Male Threaded Adapter, 3/8" PEX x 1/2" NPT	LF4523850	MNPT 1/2"	0.11	

Part name	Part no.	Codes	Standards	Listings
ProPEX lead-free (LF) brass male threaded adapters	All	UPC IBC IRC IPC NPC of Canada UMC NSPC IMC	ASTM F877 ASTM F1960 CSA B137.5	IAPMO-ES ICC-ES-PMG U.P.Code
In addition, the following parts have additional codes, standards, or listings:				
ProPEX LF Brass Male Threaded Adapter, 3/4" PEX x 3/4" NPT	LF4527575		NSF-372 NSF-61 NSF-14	cNSFus-pw-G
ProPEX LF Brass Male Threaded Adapter, 1" PEX x 1" NPT	LF4521010		NSF-372 UL 1821 NSF-61 NSF-14	cNSFus-pw-fs-G
ProPEX LF Brass Male Threaded Adapter, 1 1/4" PEX x 1 1/4" NPT	LF4521313		NSF-372 UL 1821 NSF-61 NSF-14	cNSFus-pw-fs-G
ProPEX LF Brass Male Threaded Adapter, 1/2" PEX x 1/2" NPT	LF4525050		NSF-372 NSF-61 NSF-14	cNSFus-pw-G
ProPEX LF Brass Male Threaded Adapter, 3/4" PEX x 1" NPT	LF4527510		NSF-372 NSF-61 NSF-14	cNSFus-pw-G
ProPEX LF Brass Male Threaded Adapter, 1" PEX x 3/4" NPT	LF4521075		NSF-372 NSF-61 NSF-14	cNSFus-pw-G
ProPEX LF Brass Male Threaded Adapter, 1 1/2" PEX x 1 1/2" NPT	LF4521515		NSF-372 NSF-61 NSF-14	cNSFus-pw-G
ProPEX LF Brass Male Threaded Adapter, 2" PEX x 2" NPT	LF4522020		NSF-372 NSF-61 NSF-14	cNSFus-pw-G
ProPEX LF Brass Male Threaded Adapter, 1/2" PEX x 3/4" NPT	LF4525075		NSF/ANSI/CAN 372 UL 1821 NSF/ANSI/CAN 61 NSF/ANSI 14	cNSFus-pw-fs-G
ProPEX LF Brass Male Threaded Adapter, 2 1/2" PEX x 2 1/2" NPT	LF4522525		NSF-372 NSF-61 NSF-14	cNSFus-pw-G
ProPEX LF Brass Male Threaded Adapter, 3" PEX x 3" NPT	LF4523030		NSF-372 NSF-61 NSF-14	cNSFus-pw-G
ProPEX LF Brass Male Threaded Adapter, 3/8" PEX x 1/2" NPT	LF4523850		NSF-372 NSF-61 NSF-14	cNSFus-pw-G

Installation	Related applications
Use the appropriate ProPEX Ring for PEX-a tubing. Refer to the Uponor Professional Plumbing Installation Guide, AquaSAFE™ Residential Fire Sprinkler Installation Guide or Uponor Radiant Installation Handbook for additional information.	PEX-a Plumbing Systems
	Radiant Heating and Cooling Systems
	Permafrost Protection Systems
	Turf Conditioning Systems
	AquaSAFE™ Fire Safety Systems

Footnotes	Contact information
-	<div>           Uponor Inc.            5925 148th Street West            Apple Valley, MN 55124            T 800.321.4739            F 952.891.2008         </div> <div>           Uponor Ltd.            6510 Kennedy Road            Mississauga, ON L5T 2X4            T 888.594.7726            F 800.638.9517         </div>