

ProPEX lead-free (LF) brass to polybutylene (PB) couplings

Project information

| | |
|--------------------------------|-----------------|
| Job name: | Location: |
| Engineer: | Date submitted: |
| Contractor: | Submitted by: |
| Manufacturer's representative: | Approved by: |

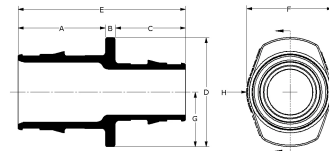
Technical data

| | |
|-------------------------|--|
| Material | LF Brass |
| Temp/pressure ratings | 73 °F (23 °C) at 160 psi (11 bar) 180 °F (82 °C) at 100 psi (6.9 bar) 200 °F (93 °C) at 80 psi (5.5 bar) |
| Prop 65 label required? | Yes |

Product information and application use

The ProPEX® Lead-free Brass to Polybutylene (PB) Coupling transitions polybutylene tubing to Uponor AquaPEX® tubing. This product does not include the crimp ring for the PB side of the coupling. Approved for use in hot and cold domestic potable water systems, this coupling is also safe for direct burial in soil.

Note: Temperature and pressure ratings stated are hydrostatic ratings. For domestic hot-water (DHW) and DHW recirculation installations, operating conditions should not exceed 140°F (60°C) at 80 psi (5.5 bar) in accordance with ASTM F2023. For additional information regarding application-specific temperature and pressure ratings, refer to the Uponor PEX Piping Systems Design and Installation Manual.



| Part name | Part no. | A [inch] | B [inch] | C [inch] | D [inch] | E [inch] | F [inch] | G [inch] | H [inch] | End Type 1 | End Type 2 |
|--|-----------|-------------|-------------|-------------|-------------|-------------|-------------|-------------|-------------|------------------|------------------|
| ProPEX LF Brass to PB Coupling, 1/2" PEX x 1/2" PB | LF4585050 | 0.709 | 0.125 | 0.633 | 0.77 | 1.467 | 0.77 | 0.385 | 0.385 | ProPEX 1/2" | PB 1/2" |
| ProPEX LF Brass to PB Coupling, 3/4" PEX x 3/4" PB | LF4587575 | 0.945 | 0.125 | 0.693 | 1.1 | 1.763 | 1.1 | 0.55 | 0.55 | ProPEX 3/4" | PB 3/4" |

| Part name | Part no. | Weight per UOM [lbs/UOM] |
|--|-----------|--------------------------|
| ProPEX LF Brass to PB Coupling, 1/2" PEX x 1/2" PB | LF4585050 | 0.2 |
| ProPEX LF Brass to PB Coupling, 3/4" PEX x 3/4" PB | LF4587575 | 0.4 |

| Part name | Part no. | Codes | Standards | Listings |
|--|----------|--|--|---|
| ProPEX lead-free (LF) brass to polybutylene (PB) couplings | All | UPC IBC IRC IPC NPC of Canada UMC NSPC IMC | ASTM F877 NSF/ANSI/CAN 372 ASTM F1960 CSA B137.5 NSF/ANSI/CAN 61 NSF/ANSI 14 | ICC-ES-PMG cNSFus-pw-G APMO 3558 U.P.Code |

In addition, the following parts have additional codes, standards, or listings:

| | |
|--|-----------|
| ProPEX LF Brass to PB Coupling, 3/4" PEX x 3/4" PB | LF4587575 |
|--|-----------|

Installation

Use the appropriate Uponor ProPEX Ring (sold separately) for connecting to PEX tubing. Secure the PB tubing to the fitting with a crimp ring. For more information, refer to the AquaPEX Professional Plumbing Installation Guide.

Related applications

PEX-a Plumbing Systems

Footnotes

-

Contact information

Uponor Inc.
5925 148th Street West
Apple Valley, MN 55124
T 800.321.4739
F 952.891.2008

Uponor Ltd.
6510 Kennedy Road
Mississauga, ON L5T 2X4
T 888.594.7726
F 800.638.9517