

ProPEX lead-free (LF) brass groove fitting adapters

Project information

Job name:	Location:
Engineer:	Date submitted:
Contractor:	Submitted by:
Manufacturer's representative:	Approved by:

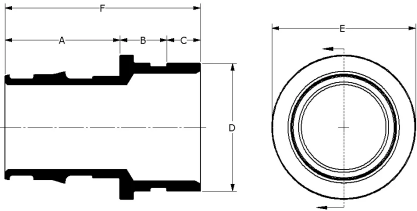
Technical data

Material	LF Brass
Temp/pressure ratings	73 °F (23 °C) at 160 psi (11 bar) 180 °F (82 °C) at 100 psi (6.9 bar) 200 °F (93 °C) at 80 psi (5.5 bar)
Prop 65 label required?	Yes

Product information and application use

ProPEX® lead-free (LF) brass copper tube size (CTS) roll-groove fitting adapters provide a direct connection to roll-groove connections designed to meet CSA B242-05. These fittings are CTS size on the roll-groove connection side.

Note: Temperature and pressure ratings stated are hydrostatic ratings. For domestic hot-water (DHW) and DHW recirculation installations, operating conditions should not exceed 140°F (60°C) at 80 psi (5.5 bar) in accordance with ASTM F2023. For additional information regarding application-specific temperature and pressure ratings, refer to the Uponor PEX Piping Systems Design and Installation Manual.



Part name	Part no.	Cv	End Type 1	End Type 2
ProPEX LF Groove Fitting Adapter, 2" PEX LF Brass x 2" CTS Groove	LFV2962020	141.4	ProPEX 2"	CTS Groove 2"
ProPEX LF Groove Fitting Adapter, 2 1/2" PEX LF Brass x 2 1/2" CTS Groove	LFV2962525	222.7	ProPEX 2-1/2"	CTS Groove 2-1/2"
ProPEX LF Groove Fitting Adapter, 3" PEX LF Brass x 3" CTS Groove	LFV2963030	338.3	ProPEX 3"	CTS Groove 3"
ProPEX LF Groove Fitting Adapter, 2" PEX LF Brass x 2" IPS Groove	LFV2972020	114.5	ProPEX 2"	IPS Groove 2"
ProPEX LF Groove Fitting Adapter, 2 1/2" PEX LF Brass x 2 1/2" IPS Groove	LFV2972525	202	ProPEX 2-1/2"	IPS Groove 2-1/2"
ProPEX LF Groove Fitting Adapter, 2 1/2" PEX LF Brass x 3" IPS Groove	LFV2972530	199.8	ProPEX 2-1/2"	IPS Groove 3"
ProPEX LF Groove Fitting Adapter, 3" PEX LF Brass x 3" IPS Groove	LFV2973030	282.4	ProPEX 3"	IPS Groove 3"

Part name	Part no.	Codes	Standards	Listings
ProPEX lead-free (LF) brass groove fitting adapters	All	UPC IBC IRC IPC NPC of Canada UMC NSPC IMC	NSF-372 ASTM F877 ASTM F1960 CSA B137.5 NSF-61 NSF-14	IAPMO-ES ICC-ES-PMG cNSFus-pw-G U.P.Code

Installation

ProPEX tool and ProPEX rings (sold separately) are required for connecting the PEX tubing. For more information, refer to the Uponor AquaPEX® professional plumbing installation guide. For making roll-groove connections, follow the roll-groove fitting manufacturer's installation instructions

Related applications

- PEX-a Plumbing Systems
- Hydronic Radiant Heating and Cooling Systems
- Permafrost Protection Systems
- Turf Conditioning Systems

Notes

- Cv = 141.4 when connecting Pex to Pex
Cv Outlet 2 = 86.1 when transitioning from Metal to Pex
- Cv = 222.7 when connecting Pex to Pex
Cv Outlet 2 = 138.7 when transitioning Metal to Pex
- Cv = 338.3 when connecting Pex to Pex
Cv Outlet 2 = 192.3 when transitioning Metal to Pex
- Cv = 114.5 when connecting Pex to Pex
Cv Outlet 2 = 79.7 when transitioning Metal to Pex
- Cv = 202 when connecting Pex to Pex
Cv Outlet 2 = 130.2 when transitioning Metal to Pex
- Cv = 199.8 when connecting Pex to Pex
Cv Outlet 2 = 114.9 when transitioning Metal to Pex

Cv = 282.4 when connecting Pex to Pex
Cv Outlet 2 = 177.4 when transitioning from Metal to Pex

Footnotes	Contact information	
-	Uponor Inc. 5925 148th Street West Apple Valley, MN 55124 T 800.321.4739 F 952.891.2008	Uponor Ltd. 6510 Kennedy Road Mississauga, ON L5T 2X4 T 888.594.7726 F 800.638.9517