

EP flow-through multi-port tees

Project information

Job name:	Location:
Engineer:	Date submitted:
Contractor:	Submitted by:
Manufacturer's representative:	Approved by:

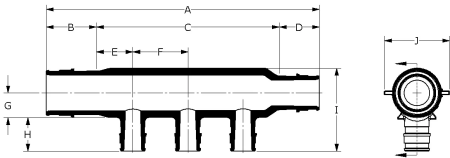
Technical data

Material	Engineered Polymer
End type 3	ProPEX 1/2"
Temp/pressure ratings	73 °F (23 °C) at 160 psi (11 bar)
	180 °F (82 °C) at 100 psi (6.9 bar)
	200 °F (93 °C) at 80 psi (5.5 bar)

Product information and application use

Engineered polymer (EP) flow-through multi-port tees feature 3/4" or 1" ProPEX® inlets with 1/2" ProPEX branch outlets. The tees are made of EP, a high-performance material used in demanding, hot-water applications

Note: Temperature and pressure ratings stated are hydrostatic ratings. For domestic hot-water (DHW) and DHW recirculation installations, operating conditions should not exceed 140°F (60°C) at 80 psi (5.5 bar) in accordance with ASTM F2023. For additional information regarding application-specific temperature and pressure ratings, refer to the Uponor PEX Piping Systems Design and Installation Manual.



Part name	Part no.	Cv Through	End Type 1	End Type 2	End Type 4
EP Flow-through Multi-port Tee, 2 (1/2") outlets, 3/4" x 3/4" ProPEX	Q2227557	15.3	ProPEX 3/4"	ProPEX 3/4"	-
EP Flow-through Multi-port Tee, 3 (1/2") outlets, 3/4" x 3/4" ProPEX	Q2237557	14.2	ProPEX 3/4"	ProPEX 3/4"	ProPEX
EP Flow-through Multi-port Tee, 3 (1/2") outlets, 1" x 3/4" ProPEX	Q2231057	11.6	ProPEX 1"	ProPEX 3/4"	-
EP Flow-through Multi-port Tee, 4 (1/2") outlets, 3/4" x 3/4" ProPEX	Q2247557	13.8	ProPEX 3/4"	ProPEX 3/4"	ProPEX
EP Flow-through Multi-port Tee, 4 (1/2") outlets, 1" x 3/4" ProPEX	Q2241057	11.7	ProPEX 1"	ProPEX 3/4"	-
EP Flow-through Multi-port Tee, 6 (1/2") outlets, 3/4" x 3/4" ProPEX	Q2267557	13.2	ProPEX 3/4"	ProPEX 3/4"	-
EP Flow-through Multi-port Tee, 6 (1/2") outlets, 1" x 3/4" ProPEX	Q2261057	11.8	ProPEX 1"	ProPEX 3/4"	-
EP Flow-through Multi-port Tee, 6 (1/2") outlets, 1" x 1" ProPEX	Q2261051	25.1	ProPEX 1"	ProPEX 1"	-
EP Flow-through Multi-port Tee, 4 (1/2") outlets, 1" x 1" ProPEX	Q2241051	29.3	ProPEX 1"	ProPEX 1"	-

Part name	Part no.	Codes	Standards	Listings
EP flow-through multi-port tees	All	UPC IBC IRC IPC NPC of Canada UMC NSPC IMC	ASTM E814 ULC S115 ASTM F877 ASTM F1960 CSA B137.5 ULC S102.2 ASTM E119 UL 263 NSF/ANSI/CAN 61 ULC S101 NSF/ANSI 14	IAPMO-ES HUD MR 1269 ICC-ES-PMG cNSFus-pw UL U.P.Code cQAlus P321

Installation

For a mounting bracket, use any product designed to mount 1" copper pipe for the 3/4" EP flow-through multi-port tees or 1 1/4" copper pipe for the 1" EP flow-through multi-port tees. For more information, refer to the Uponor Piping Systems Installation Guide.

Related applications

PEX-a Plumbing Systems

Footnotes

-

Contact information

Uponor Inc. 5925 148th Street West Apple Valley, MN 55124 T 800.321.4739 F 952.891.2008	Uponor Ltd. 6510 Kennedy Road Mississauga, ON L5T 2X4 T 888.594.7726 F 800.638.9517
---	---