

# ProPEX baseboard elbows

## Project information

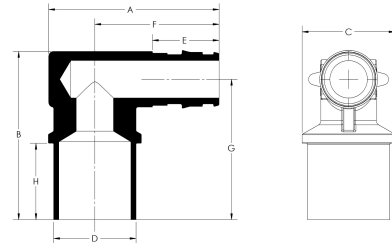
Job name:	Location:
Engineer:	Date submitted:
Contractor:	Submitted by:
Manufacturer's representative:	Approved by:

## Technical data

Material	Brass
End type 2	Sweat 3/4"
Temp/pressure ratings	73 °F (23 °C) at 160 psi (11 bar) 180 °F (82 °C) at 100 psi (6.9 bar) 200 °F (93 °C) at 80 psi (5.5 bar)
Prop 65 label required?	Yes

## Product information and application use

The Uponor ProPEX® Baseboard elbow Copper Adapter can be used in any heating system applying the use of fin-tube baseboard or unit-type heaters. One end of the tee adapter features a ProPEX fitting for an easy transition from copper pipe to Wirsbo hePEXTM tubing or Uponor AquaPEX® tubing.



Part name	Part no.	A [inch]	B [inch]	C [inch]	D [inch]	E [inch]	F [inch]	G [inch]	H [inch]	End Type 1	Weight per UOM [lbs/UOM]
ProPEX Baseboard Elbow, 1/2" PEX x 3/4" Copper Adapter	Q4385075	1.81	1.796	0.987	0.872	0.709	1.32	1.489	0.75	ProPEX 1/2"	-
ProPEX Baseboard Elbow, 5/8" PEX x 3/4" Copper Adapter	Q4386375	1.861	0.372	1.489	0.614	0.866	1.974	1.04	0.75	ProPEX 5/8"	0.17
ProPEX Baseboard Elbow, 3/4" PEX x 3/4" Copper Adapter	Q4387575	1.924	0.435	1.489	0.615	0.945	2.054	1.2	0.75	ProPEX 3/4"	0.36
ProPEX Baseboard Elbow, 1/2" PEX x 3/4" Copper Fitting Adapter	Q4375075	1.81	1.796	0.987	0.869	0.709	1.32	1.489	0.81	ProPEX 1/2"	0.16
ProPEX Baseboard Elbow, 5/8" PEX x 3/4" Copper Fitting Adapter	Q4376375	2.03	1.861	1.04	0.874	0.866	1.48	1.489	0.81	ProPEX 5/8"	0.19
ProPEX Baseboard Elbow, 3/4" PEX x 3/4" Copper Fitting Adapter	Q4377575	2.13	1.924	1.2	0.868	0.945	1.56	1.489	0.81	ProPEX 3/4"	-

Part name	Part no.	Codes	Standards	Listings
ProPEX baseboard elbows	All	IMC	ASTM F1960 CSA B137.5 ASTM F877	IAPMO-ES ICC-ES-PMG cNSFus-rfh
In addition, the following parts have additional codes, standards, or listings:				
ProPEX Baseboard Elbow, 1/2" PEX x 3/4" Copper Adapter	Q4385075		NSF/ANSI 14	
ProPEX Baseboard Elbow, 5/8" PEX x 3/4" Copper Adapter	Q4386375		NSF-14	
ProPEX Baseboard Elbow, 3/4" PEX x 3/4" Copper Adapter	Q4387575		NSF-14	
ProPEX Baseboard Elbow, 1/2" PEX x 3/4" Copper Fitting Adapter	Q4375075		NSF/ANSI 14	
ProPEX Baseboard Elbow, 5/8" PEX x 3/4" Copper Fitting Adapter	Q4376375		NSF/ANSI 14	
ProPEX Baseboard Elbow, 3/4" PEX x 3/4" Copper Fitting Adapter	Q4377575		NSF/ANSI 14	

## Installation

Use the appropriate ProPEX Ring for tubing (sold separately). Do not solder within 18 inches of the ProPEX connection. Refer to the Uponor Radiant Floor Heating Installation Handbook for additional information.

## Related applications

Radiant Heating and Cooling Systems  
Permafrost Protection Systems  
Turf Conditioning Systems  
AquaSAFE™ Fire Safety Systems

Footnotes		Contact information	
-		Uponor Inc.	Uponor Ltd.
		5925 148th Street West	6510 Kennedy Road
		Apple Valley, MN 55124	Mississauga, ON L5T 2X4
		T 800.321.4739	T 888.594.7726
		F 952.891.2008	F 800.638.9517