

ProPEX baseboard elbows

Project information

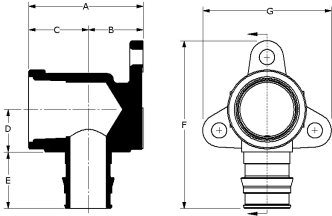
Job name:	Location:
Engineer:	Date submitted:
Contractor:	Submitted by:
Manufacturer's representative:	Approved by:

Technical data

Material	Brass
End type 2	Sweat 3/4"
Temp/pressure ratings	73 °F (23 °C) at 160 psi (11 bar) 180 °F (82 °C) at 100 psi (6.9 bar) 200 °F (93 °C) at 80 psi (5.5 bar)
Prop 65 label required?	Yes

Product information and application use

The Uponor ProPEX® Baseboard elbow Copper Adapter can be used in any heating system applying the use of fin-tube baseboard or unit-type heaters. One end of the tee adapter features a ProPEX fitting for an easy transition from copper pipe to Wirsbo hePEXTM tubing or Uponor AquaPEX® tubing.



Part name	Part no.	End Type 1
ProPEX Baseboard Elbow, 1/2" PEX x 3/4" Copper Adapter	Q4385075	ProPEX 1/2"
ProPEX Baseboard Elbow, 5/8" PEX x 3/4" Copper Adapter	Q4386375	ProPEX 5/8"
ProPEX Baseboard Elbow, 3/4" PEX x 3/4" Copper Adapter	Q4387575	ProPEX 3/4"
ProPEX Baseboard Elbow, 1/2" PEX x 3/4" Copper Fitting Adapter	Q4375075	ProPEX 1/2"
ProPEX Baseboard Elbow, 5/8" PEX x 3/4" Copper Fitting Adapter	Q4376375	ProPEX 5/8"
ProPEX Baseboard Elbow, 3/4" PEX x 3/4" Copper Fitting Adapter	Q4377575	ProPEX 3/4"

Part name	Part no.	Codes	Standards	Listings
ProPEX baseboard elbows	All	IMC	ASTM F1960 CSA B137.5 NSF-14 ASTM F877	IAPMO-ES ICC-ES-PMG cNSFus-rfh

Installation	Related applications
Use the appropriate ProPEX Ring for tubing (sold separately). Do not solder within 18 inches of the ProPEX connection. Refer to the Uponor Radiant Floor Heating Installation Handbook for additional information.	Radiant Heating and Cooling Systems Permafrost Protection Systems Turf Conditioning Systems AquaSAFE™ Fire Safety Systems

Footnotes	Contact information
-	Uponor Inc. 5925 148th Street West Apple Valley, MN 55124 T 800.321.4739 F 952.891.2008 Uponor Ltd. 6510 Kennedy Road Mississauga, ON L5T 2X4 T 888.594.7726 F 800.638.9517