

ProPEX brass fitting adapters

Project Information

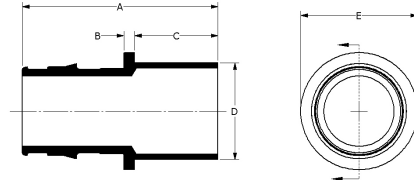
Job name:	Location:
Engineer:	Date submitted:
Contractor:	Submitted by:
Manufacturer's representative:	Approved by:

Technical data

Material	Brass
Temp/pressure ratings	73 °F (23 °C) at 160 psi (11 bar) 180 °F (82 °C) at 100 psi (6.9 bar) 200 °F (93 °C) at 80 psi (5.5 bar)
Prop 65 label required?	Yes

Product information and application use

ProPEX® Brass Fitting Adapters transition crosslinked polyethylene (PEX) tubing to copper fittings. These adapters are approved for use in hydronic radiant heating systems. One end of the adapter is manufactured with the Uponor ProPEX Fitting for connections to Wirsbo hePEX™ tubing. These adapters are safe for direct burial in soil.



Part name	Part no.	End Type 1	End Type 2	Cv
ProPEX Brass Fitting Adapter, 1/2" PEX x 1/2" Copper	Q5505050	ProPEX 1/2"	Sweat 1/2"	7.7
ProPEX Brass Fitting Adapter, 5/8" PEX x 1/2" Copper	Q4506350	ProPEX 5/8"	Sweat 1/2"	-
ProPEX Brass Fitting Adapter, 5/8" PEX x 3/4" Copper	Q4506375	ProPEX 5/8"	Sweat 3/4"	-
ProPEX Brass Fitting Adapter, 3/4" PEX x 1/2" Copper	Q5507550	ProPEX 3/4"	Sweat 1/2"	8.8
ProPEX Brass Fitting Adapter, 3/4" PEX x 3/4" Copper	Q5507575	ProPEX 3/4"	Sweat 3/4"	15.7
ProPEX Brass Fitting Adapter, 3/4" PEX x 1" Copper	Q5507510	ProPEX 3/4"	Sweat 1"	11.4
ProPEX Brass Fitting Adapter, 1" PEX x 1" Copper	Q5501010	ProPEX 1"	Sweat 1"	30.5
ProPEX Brass Fitting Adapter, 1 1/4" PEX x 1 1/4" Copper	Q5501313	ProPEX 1-1/4"	Sweat 1-1/4"	34
ProPEX Brass Fitting Adapter, 1 1/2" PEX x 1 1/2" Copper	Q5501515	ProPEX 1-1/2"	Sweat 1-1/2"	63.7

Part name	Part no.	Codes	Standards	Listings
ProPEX brass fitting adapters	All	IMC IBC IRC NPC of Canada UMC	ASTM F1960 CSA B137.5 ASTM F877	IAPMO-ES ICC-ES-PMG cNSFus-rfh
In addition, the following parts have additional codes, standards, or listings:				
ProPEX Brass Fitting Adapter, 1/2" PEX x 1/2" Copper	Q5505050		NSF/ANSI 14	
ProPEX Brass Fitting Adapter, 5/8" PEX x 1/2" Copper	Q4506350		NSF-14	
ProPEX Brass Fitting Adapter, 5/8" PEX x 3/4" Copper	Q4506375		NSF/ANSI 14	
ProPEX Brass Fitting Adapter, 3/4" PEX x 1/2" Copper	Q5507550		NSF/ANSI 14	
ProPEX Brass Fitting Adapter, 3/4" PEX x 3/4" Copper	Q5507575		NSF-14	
ProPEX Brass Fitting Adapter, 3/4" PEX x 1" Copper	Q5507510		NSF/ANSI 14	
ProPEX Brass Fitting Adapter, 1" PEX x 1" Copper	Q5501010		NSF-14	
ProPEX Brass Fitting Adapter, 1 1/4" PEX x 1 1/4" Copper	Q5501313		NSF-14	
ProPEX Brass Fitting Adapter, 1 1/2" PEX x 1 1/2" Copper	Q5501515		NSF-14	

Installation

ProPEX Tool and ProPEX Rings (sold separately) are required for connecting the PEX tubing. Do not solder within 18 inches of the ProPEX Fitting. For more information, refer to the Uponor Radiant Floor Heating Installation Handbook.

Related applications

Radiant Heating and Cooling Systems

Uponor Inc.
5925 148th Street West
Apple Valley, MN 55124
T 800.321.4739
F 952.891.2008

Uponor Ltd.
6510 Kennedy Road
Mississauga, ON L5T 2X4
T 888.594.7726
F 800.638.9517
