

ProPEX brass male threaded adapters

Project information

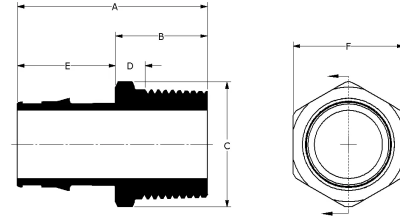
Job name:	Location:
Engineer:	Date submitted:
Contractor:	Submitted by:
Manufacturer's representative:	Approved by:

Technical data

Temp/pressure ratings	73 °F (23 °C) at 160 psi (11 bar)
	180 °F (82 °C) at 100 psi (6.9 bar)
	200 °F (93 °C) at 80 psi (5.5 bar)
Prop 65 label required?	Yes

Product information and application use

ProPEX® male threaded adapters connect Uponor PEX pipe to male NPT threads for use in hydronic heating and cooling systems. One end of the adapter is manufactured with Uponor ProPEX fittings for connection to Wirsbo hePEX™ tubing and the other end is manufactured to adapt female threaded connections. These adapters are not safe for direct burial in soil. Note: Not for potable use.



Note: Temperature and pressure ratings stated are hydrostatic ratings. For domestic hot-water (DHW) and DHW recirculation installations, operating conditions should not exceed 140°F (60°C) at 80 psi (5.5 bar) in accordance with ASTM F2023. For additional information regarding application-specific temperature and pressure ratings, refer to the Uponor PEX Piping Systems Design and Installation Manual.

Part name	Part no.	A [inch]	B [inch]	C [inch]	D [inch]	E [inch]	F [inch]	G [inch]	Cv	Equivalent length through [ft]	Material group
ProPEX Brass Male Threaded Adapter, 1 1/2" PEX x 1 1/2" NPT	Q5521515	2.829	1.125	2.202	0.402	1.704	1.92	1.101	39.3	5.5	Brass
ProPEX Brass Male Threaded Adapter, 1 1/4" PEX x 1 1/4" NPT	Q5521313	2.51	1.065	1.924	0.358	1.445	1.68	0.962	32.4	4.2	Brass
ProPEX Brass Male Threaded Adapter, 1" PEX x 1" NPT	Q5521010	2.236	1.055	1.526	0.372	1.181	1.335	0.763	19.9	3.2	Brass
ProPEX Brass Male Threaded Adapter, 1" PEX x 3/4" NPT	Q5521075	2.136	0.955	1.37	0.409	1.181	1.2	0.685	17.8	1.2	Brass
ProPEX Brass Male Threaded Adapter, 1/2" PEX x 1/2" NPT	Q5525050	1.614	0.905	0.978	0.371	0.709	0.86	0.489	5	2.3	Brass
ProPEX Brass Male Threaded Adapter, 2" PEX x 2" NPT	Q5522020	3.432	1.285	2.75	0.528	2.147	2.395	1.375	78.6	5.61	Brass
ProPEX Brass Male Threaded Adapter, 3/4" PEX x 1" NPT	Q5527510	2.05	1.105	1.526	0.422	0.945	1.335	0.763	10.9	3.4	Brass
ProPEX Brass Male Threaded Adapter, 3/4" PEX x 1/2" NPT	Q5527550	1.85	0.905	1.22	0.359	0.945	1.07	0.61	17.5	1.52	Brass
ProPEX Brass Male Threaded Adapter, 3/4" PEX x 3/4" NPT	Q5527575	1.85	0.905	1.22	0.359	0.945	1.07	0.61	11.3	2.7	Brass
ProPEX Brass Male Threaded Adapter, 5/8" PEX x 3/4" NPT	Q4526375	1.941	1.075	1.299	0.425	0.866	1.125	0.65	-	-	Brass
ProPEX LF Brass Male Threaded Adapter, 1/2" PEX x 3/4" NPT	LF4525075	1.639	0.93	1.206	0.384	0.709	1.07	0.603	6.2	-	LF Brass
ProPEX LF Brass Male Threaded Adapter, 2 1/2" PEX x 2 1/2" NPT	LF4522525	4.83	2	3.279	0.863	2.83	2.9	1.639	227.3	1.5	LF Brass
ProPEX LF Brass Male Threaded Adapter, 3" PEX x 3" NPT	LF4523030	5.38	2	3.994	0.8	3.38	3.52	1.997	187.5	9.1	LF Brass
ProPEX LF Brass Male Threaded Adapter, 3/8" PEX x 1/2" NPT	LF4523850	1.521	0.93	0.963	0.396	0.591	0.86	0.481	5	2.3	LF Brass

Part name	Part no.	End Type 1	End Type 2	Weight per UOM [lbs/UOM]
ProPEX Brass Male Threaded Adapter, 1 1/2" PEX x 1 1/2" NPT	Q5521515	ProPEX 1-1/2"	MNPT 1-1/2"	0.66
ProPEX Brass Male Threaded Adapter, 1 1/4" PEX x 1 1/4" NPT	Q5521313	ProPEX 1-1/4"	MNPT 1-1/4"	0.65
ProPEX Brass Male Threaded Adapter, 1" PEX x 1" NPT	Q5521010	ProPEX 1"	MNPT 1"	0.45
ProPEX Brass Male Threaded Adapter, 1" PEX x 3/4" NPT	Q5521075	ProPEX 1"	MNPT 3/4"	0.26

ProPEX Brass Male Threaded Adapter, 1/2" PEX x 1/2" NPT	Q5525050	ProPEX 1/2"	MNPT 1/2"	0.12
ProPEX Brass Male Threaded Adapter, 2" PEX x 2" NPT	Q5522020	ProPEX 2"	MNPT 2"	2
ProPEX Brass Male Threaded Adapter, 3/4" PEX x 1" NPT	Q5527510	ProPEX 3/4"	MNPT 1"	0.3
ProPEX Brass Male Threaded Adapter, 3/4" PEX x 1/2" NPT	Q5527550	ProPEX 3/4"	MNPT 1/2"	0.16
ProPEX Brass Male Threaded Adapter, 3/4" PEX x 3/4" NPT	Q5527575	ProPEX 3/4"	MNPT 3/4"	0.19
ProPEX Brass Male Threaded Adapter, 5/8" PEX x 3/4" NPT	Q4526375	ProPEX 5/8"	MNPT 3/4"	0.18
ProPEX LF Brass Male Threaded Adapter, 1/2" PEX x 3/4" NPT	LF4525075	ProPEX 1/2"	MNPT 3/4"	-
ProPEX LF Brass Male Threaded Adapter, 2 1/2" PEX x 2 1/2" NPT	LF4522525	ProPEX 2-1/2"	MNPT 2-1/2"	3.1
ProPEX LF Brass Male Threaded Adapter, 3" PEX x 3" NPT	LF4523030	ProPEX 3"	MNPT 3"	4.9
ProPEX LF Brass Male Threaded Adapter, 3/8" PEX x 1/2" NPT	LF4523850	ProPEX 3/8"	MNPT 1/2"	0.11

Part name	Part no.	Codes	Standards	Listings
-----------	----------	-------	-----------	----------

ProPEX brass male threaded adapters	All	IBC IRC NPC of Canada UMC IMC	ASTM F877 ASTM F1960 CSA B137.5	IAPMO-ES ICC-ES-PMG
-------------------------------------	-----	-------------------------------	---------------------------------	---------------------

In addition, the following parts have additional codes, standards, or listings:

ProPEX Brass Male Threaded Adapter, 1 1/2" PEX x 1 1/2" NPT	Q5521515		NSF-14	cNSFus-rfh
ProPEX Brass Male Threaded Adapter, 1 1/4" PEX x 1 1/4" NPT	Q5521313		NSF-14	cNSFus-rfh
ProPEX Brass Male Threaded Adapter, 1" PEX x 1" NPT	Q5521010		NSF-14	cNSFus-rfh
ProPEX Brass Male Threaded Adapter, 1" PEX x 3/4" NPT	Q5521075		NSF-14	cNSFus-rfh
ProPEX Brass Male Threaded Adapter, 1/2" PEX x 1/2" NPT	Q5525050		NSF-14	cNSFus-rfh
ProPEX Brass Male Threaded Adapter, 2" PEX x 2" NPT	Q5522020		NSF-14	cNSFus-rfh
ProPEX Brass Male Threaded Adapter, 3/4" PEX x 1" NPT	Q5527510		NSF-14	cNSFus-rfh
ProPEX Brass Male Threaded Adapter, 3/4" PEX x 1/2" NPT	Q5527550		NSF-14	cNSFus-rfh
ProPEX Brass Male Threaded Adapter, 3/4" PEX x 3/4" NPT	Q5527575		NSF-14	cNSFus-rfh
ProPEX Brass Male Threaded Adapter, 5/8" PEX x 3/4" NPT	Q4526375		NSF-14	cNSFus-rfh
ProPEX LF Brass Male Threaded Adapter, 1/2" PEX x 3/4" NPT	LF4525075	UPC IPC NSPC	NSF/ANSI/CAN 372 UL 1821 NSF/ANSI/CAN 61 NSF/ANSI 14	cNSFus-pw-fs-G U.P.Code
ProPEX LF Brass Male Threaded Adapter, 2 1/2" PEX x 2 1/2" NPT	LF4522525	UPC IPC NSPC	NSF-372 NSF-61 NSF-14	cNSFus-pw-G U.P.Code
ProPEX LF Brass Male Threaded Adapter, 3" PEX x 3" NPT	LF4523030	UPC IPC NSPC	NSF-372 NSF-61 NSF-14	cNSFus-pw-G U.P.Code
ProPEX LF Brass Male Threaded Adapter, 3/8" PEX x 1/2" NPT	LF4523850	UPC IPC NSPC	NSF-372 NSF-61 NSF-14	cNSFus-pw-G U.P.Code

Installation	Related applications
Use the appropriate ProPEX ring for Uponor PEX pipe (sold separately). Refer to the Uponor Radiant Installation Handbook, Complete Design Assistance Manual (CDAM), or Hydronic Piping Design Assistance Manual (HPDAM) for additional information.	<ul style="list-style-type: none"> Radiant Heating and Cooling Systems Permafrost Protection Systems Turf Conditioning Systems Hydronic Piping Systems

Footnotes	Contact information
-	<p>Uponor Inc. 5925 148th Street West Apple Valley, MN 55124 T 800.321.4739 F 952.891.2008</p> <p>Uponor Ltd. 6510 Kennedy Road Mississauga, ON L5T 2X4 T 888.594.7726 F 800.638.9517</p>