

ProPEX engineered polymer (EP) water meter fittings

Project Information

Job name:	Location:
Engineer:	Date submitted:
Contractor:	Submitted by:
Manufacturer's representative:	Approved by:

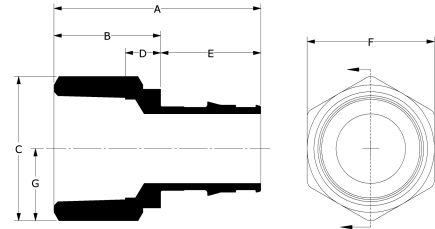
Technical data

Material	Engineered Polymer
Temp/pressure ratings	73 °F (23 °C) at 160 psi (11 bar) 180 °F (82 °C) at 100 psi (6.9 bar) 200 °F (93 °C) at 80 psi (5.5 bar)
Prop 65 label required?	Yes

Product information and application use

ProPEX® engineered polymer (EP) water meter service fittings make connections for Uponor crosslinked polyethylene (PEX) tubing for use in hot or cold domestic potable water systems. Inlet PEX end is manufactured with an Uponor ProPEX fitting for connections to Uponor AquaPEX® tubing. The other end is manufactured to meet the NPSM threads of the water meter.

Note: Temperature and pressure ratings stated are hydrostatic ratings. For domestic hot-water (DHW) and DHW recirculation installations, operating conditions should not exceed 140°F (60°C) at 80 psi (5.5 bar) in accordance with ASTM F2023. For additional information regarding application-specific temperature and pressure ratings, refer to the Uponor PEX Piping Systems Design and Installation Manual.



Part name	Part no.	A [inch]	B [inch]	C [inch]	D [inch]	E [inch]	F [inch]	G [inch]	H [inch]	End Type 1	End Type 2
ProPEX EP Straight Water Meter Fitting, 3/4" PEX x 1" NPSM	WS4360750	2.989	2.034	1.9	1.657	0.955	1.75	0.95	-	ProPEX 3/4"	NPSM 1"
ProPEX EP Elbow Water Meter Fitting, 3/4" PEX x 1" NPSM	WS4360751	3.18	0.435	2.745	0.62	0.955	2.525	1.9	0.377	ProPEX 3/4"	NPSM 1"
ProPEX EP Straight Water Meter Fitting, 1" PEX x 1 1/4" NPSM	WS4361000	3.606	2.415	2.25	1.883	1.191	2.125	1.125	-	ProPEX 1"	NPSM 1-1/4"
ProPEX EP Elbow Water Meter Fitting, 1" PEX x 1 1/4" NPSM	WS4361001	3.828	0.553	3.275	0.75	1.191	3.066	2.25	0.532	ProPEX 1"	NPSM 1-1/4"

Part name	Part no.	Weight per UOM [lbs/UOM]
ProPEX EP Straight Water Meter Fitting, 3/4" PEX x 1" NPSM	WS4360750	0.22
ProPEX EP Elbow Water Meter Fitting, 3/4" PEX x 1" NPSM	WS4360751	0.24
ProPEX EP Straight Water Meter Fitting, 1" PEX x 1 1/4" NPSM	WS4361000	0.3
ProPEX EP Elbow Water Meter Fitting, 1" PEX x 1 1/4" NPSM	WS4361001	0.34

Part name	Part no.	Codes	Standards	Listings
ProPEX engineered polymer (EP) water meter fittings	All	UPC IBC IRC IPC NPC of Canada UMC NSPC IMC	ASTM E814 JULC S115 ASTM F877 ASTM F1960 CSA B137.5 JULC S102.2 ASTM E119 UL 263 NSF-61 JULC S101 ASTM E84 NSF-14	IAPMO-ES HUD MR 1269 ICC-ES-PMG cNSFus-pw U.P.Code cQAIus P321

Installation

ProPEX tool and ProPEX rings (sold separately) are required for connecting the PEX tubing. For more information, refer to the Uponor Piping Pocket Guide.

Related applications

PEX-a Plumbing Systems

Footnotes

Contact information

Uponor Inc.
5925 148th Street West
Apple Valley, MN 55124
T 800.321.4739
F 952.891.2008

Uponor Ltd.
6510 Kennedy Road
Mississauga, ON L5T 2X4
T 888.594.7726
F 800.638.9517