

Uponor PP-RCT saddles (outlet and socket fusion)

Project information

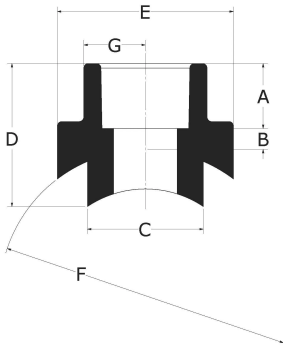
| | |
|--------------------------------|-----------------|
| Job name: | Location: |
| Engineer: | Date submitted: |
| Contractor: | Submitted by: |
| Manufacturer's representative: | Approved by: |

Technical data

| | |
|-----------------------|--------------------------------------|
| Material | PP-RCT |
| Temp/pressure ratings | 73 °F (23 °C) at 340 psi (23.44 bar) |
| | 140 °F (60 °C) at 190 psi (13.1 bar) |
| | 180 °F (82 °C) at 100 psi (6.9 bar) |

Product information and application use

Use Uponor PP-RCT saddles with Uponor PP-RCT mechanical pipe to convey water for hydronic heating and cooling or industrial applications.



| Part name | Part no. | End Type 1 | End Type 2 |
|--|------------|---------------|---------------|
| Uponor PP-RCT Saddle, 10" x 1", for Outlet Fusion | PR47810010 | Saddle 10" | Socket 1" |
| Uponor PP-RCT Saddle, 10" x 2 1/2", for Outlet Fusion | PR47810025 | Saddle 10" | Socket 2-1/2" |
| Uponor PP-RCT Saddle, 10" x 3", for Outlet Fusion | PR47810030 | Saddle 10" | Socket 3" |
| Uponor PP-RCT Saddle, 10" x 4", for Outlet Fusion | PR47810040 | Saddle 10" | Socket 4" |
| Uponor PP-RCT Saddle, 12" x 2", for Outlet Fusion | PR47812020 | Saddle 12" | Socket 2" |
| Uponor PP-RCT Saddle, 12" x 2 1/2", for Outlet Fusion | PR47812025 | Saddle 12" | Socket 2-1/2" |
| Uponor PP-RCT Saddle, 12" x 3", for Outlet Fusion | PR47812030 | Saddle 12" | Socket 3" |
| Uponor PP-RCT Saddle, 12" x 4", for Outlet Fusion | PR47812040 | Saddle 12" | Socket 4" |
| Uponor PP-RCT Saddle, 1 1/4" x 1/2", for Outlet Fusion | PR4781350 | Saddle 1-1/4" | Socket 1/2" |
| Uponor PP-RCT Saddle, 1 1/4" x 3/4", for Outlet Fusion | PR4781375 | Saddle 1-1/4" | Socket 1/2" |
| Uponor PP-RCT Saddle, 1 1/2" x 1/2", for Outlet Fusion | PR4781550 | Saddle 1-1/2" | Socket 1/2" |
| Uponor PP-RCT Saddle, 1 1/2" x 3/4", for Outlet Fusion | PR4781575 | Saddle 1-1/2" | Socket 3/4" |
| Uponor PP-RCT Saddle, 2" x 1", for Outlet Fusion | PR4782010 | Saddle 2" | Socket 1" |
| Uponor PP-RCT Saddle, 2" x 1/2", for Outlet Fusion | PR4782050 | Saddle 2" | Socket 1/2" |
| Uponor PP-RCT Saddle, 2" x 3/4", for Outlet Fusion | PR4782075 | Saddle 2" | Socket 3/4" |
| Uponor PP-RCT Saddle, 2 1/2" x 1", for Outlet Fusion | PR4782510 | Saddle 2-1/2" | Socket 1" |
| Uponor PP-RCT Saddle, 2 1/2" x 1/2", for Outlet Fusion | PR4782550 | Saddle 2-1/2" | Socket 1/2" |
| Uponor PP-RCT Saddle, 2 1/2" x 3/4", for Outlet Fusion | PR4782575 | Saddle 2-1/2" | Socket 3/4" |
| Uponor PP-RCT Saddle, 3" x 1", for Outlet Fusion | PR4783010 | Saddle 3" | Socket 1" |
| Uponor PP-RCT Saddle, 3" x 1/2", for Outlet Fusion | PR4783050 | Saddle 3" | Socket 1/2" |
| Uponor PP-RCT Saddle, 3" x 3/4", for Outlet Fusion | PR4783075 | Saddle 3" | Socket 3/4" |
| Uponor PP-RCT Saddle, 4" x 1", for Outlet Fusion | PR4784010 | Saddle 4" | Socket 1" |
| Uponor PP-RCT Saddle, 4" x 1 1/4", for Outlet Fusion | PR4784013 | Saddle 4" | Socket 1-1/4" |
| Uponor PP-RCT Saddle, 4" x 1 1/2", for Outlet Fusion | PR4784015 | Saddle 4" | Socket 1-1/2" |
| Uponor PP-RCT Saddle, 4" x 2", for Outlet Fusion | PR4784020 | Saddle 4" | Socket 2" |
| Uponor PP-RCT Saddle, 4" x 1/2", for Outlet Fusion | PR4784050 | Saddle 4" | Socket 1/2" |
| Uponor PP-RCT Saddle, 4" x 3/4", for Outlet Fusion | PR4784075 | Saddle 4" | Socket 3/4" |
| Uponor PP-RCT Saddle, 6" x 1", for Outlet Fusion | PR4786010 | Saddle 6" | Socket 1" |

| | | | |
|--|------------|---------------|---------------|
| Uponor PP-RCT Saddle, 6" x 1 1/4", for Outlet Fusion | PR4786013 | Saddle 6" | Socket 1-1/4" |
| Uponor PP-RCT Saddle, 6" x 1 1/2", for Outlet Fusion | PR4786015 | Saddle 6" | Socket 1-1/2" |
| Uponor PP-RCT Saddle, 6" x 2", for Outlet Fusion | PR4786020 | Saddle 6" | Socket 2" |
| Uponor PP-RCT Saddle, 6" x 2 1/2", for Outlet Fusion | PR4786025 | Saddle 6" | Socket 2-1/2" |
| Uponor PP-RCT Saddle, 8" x 1", for Outlet Fusion | PR4788010 | Saddle 8" | Socket 1" |
| Uponor PP-RCT Saddle, 8" x 1 1/2", for Outlet Fusion | PR4788015 | Saddle 8" | Socket 1-1/2" |
| Uponor PP-RCT Saddle, 8" x 2", for Outlet Fusion | PR4788020 | Saddle 8" | Socket 2" |
| Uponor PP-RCT Saddle, 8" x 2 1/2", for Outlet Fusion | PR4788025 | Saddle 8" | Socket 2-1/2" |
| Uponor PP-RCT Saddle, 8" x 3", for Outlet Fusion | PR4788030 | Saddle 8" | Socket 3" |
| Uponor PP-RCT Saddle, 8" x 4", for Outlet Fusion | PR4788040 | Saddle 8" | Socket 4" |
| Uponor PP-RCT Saddle, 6" x 3", for Outlet Fusion | PR4786030 | Saddle 6" | Socket 3" |
| Uponor PP-RCT Saddle, 10" x 2", for Outlet Fusion | PR47810020 | Saddle 10" | Socket 2" |
| Uponor PP-RCT Saddle, 10" x 1 1/4", for Outlet Fusion | PR47810013 | Saddle 10" | Socket 1-1/4" |
| Uponor PP-RCT Saddle, 10" x 1 1/2", for Outlet Fusion | PR47810015 | Saddle 10" | Socket 1-1/2" |
| Uponor PP-RCT Saddle, 10" x 1/2", for Outlet Fusion | PR47810050 | Saddle 10" | Socket 1/2" |
| Uponor PP-RCT Saddle, 10" x 3/4", for Outlet Fusion | PR47810075 | Saddle 10" | Socket 3/4" |
| Uponor PP-RCT Saddle, 2 1/2" x 1 1/4", for Outlet Fusion | PR4782513 | Saddle 2-1/2" | Socket 1-1/4" |
| Uponor PP-RCT Saddle, 3" x 1 1/4", for Outlet Fusion | PR4783013 | Saddle 3" | Socket 1-1/4" |
| Uponor PP-RCT Saddle, 6" x 1/2", for Outlet Fusion | PR4786050 | Saddle 6" | Socket 1/2" |
| Uponor PP-RCT Saddle, 6" x 3/4", for Outlet Fusion | PR4786075 | Saddle 6" | Socket 3/4" |
| Uponor PP-RCT Saddle, 8" x 1 1/4", for Outlet Fusion | PR4788013 | Saddle 8" | Socket 1-1/4" |
| Uponor PP-RCT Saddle, 8" x 1/2", for Outlet Fusion | PR4788050 | Saddle 8" | Socket 1/2" |
| Uponor PP-RCT Saddle, 8" x 3/4", for Outlet Fusion | PR4788075 | Saddle 8" | Socket 3/4" |

| Part name | Part no. | Codes | Standards | Listings |
|---|------------|-------------|--|---|
| Uponor PP-RCT saddles (outlet and socket fusion) | All | CMC IMC UMC | ASTM E84 NSF-14 ASTM F2389 CSA B137.11 | ICC-ES-PMG 1106 IAPMO-R&T 8358 QAI P321-5 IAPMO K-12775 |
| In addition, the following parts have additional codes, standards, or listings: | | | | |
| Uponor PP-RCT Saddle, 10" x 1 1/4", for Outlet Fusion | PR47810013 | | NSF-61 | |
| Uponor PP-RCT Saddle, 10" x 1 1/2", for Outlet Fusion | PR47810015 | | NSF-61 | |
| Uponor PP-RCT Saddle, 10" x 1/2", for Outlet Fusion | PR47810050 | | NSF-61 | |
| Uponor PP-RCT Saddle, 10" x 3/4", for Outlet Fusion | PR47810075 | | NSF-61 | |
| Uponor PP-RCT Saddle, 2 1/2" x 1 1/4", for Outlet Fusion | PR4782513 | | NSF-61 | |
| Uponor PP-RCT Saddle, 3" x 1 1/4", for Outlet Fusion | PR4783013 | | NSF-61 | |
| Uponor PP-RCT Saddle, 6" x 1/2", for Outlet Fusion | PR4786050 | | NSF-61 | |
| Uponor PP-RCT Saddle, 6" x 3/4", for Outlet Fusion | PR4786075 | | NSF-61 | |
| Uponor PP-RCT Saddle, 8" x 1 1/4", for Outlet Fusion | PR4788013 | | NSF-61 | |
| Uponor PP-RCT Saddle, 8" x 1/2", for Outlet Fusion | PR4788050 | | NSF-61 | |
| Uponor PP-RCT Saddle, 8" x 3/4", for Outlet Fusion | PR4788075 | | NSF-61 | |

| Installation | Related applications |
|--|--|
| Use approved socket-fusion connection methods. Refer to the Uponor PP-RCT manual for complete details. | Hydronic heating and cooling systems Industrial |

| Footnotes | | Contact information | |
|-----------|--|------------------------|-------------------------|
| - | | Uponor Inc. | Uponor Ltd. |
| | | 5925 148th Street West | 6510 Kennedy Road |
| | | Apple Valley, MN 55124 | Mississauga, ON L5T 2X4 |
| | | T 800.321.4739 | T 888.594.7726 |
| | | F 952.891.2008 | F 800.638.9517 |