

# Uponor PP-RCT saddles (outlet and socket fusion)

## Project Information

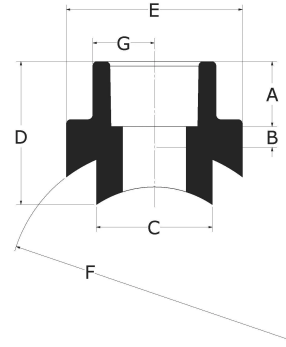
Job name:	Location:
Engineer:	Date submitted:
Contractor:	Submitted by:
Manufacturer's representative:	Approved by:

## Technical data

Material	PP-RCT
Temp/pressure ratings	73 °F (23 °C) at 340 psi (23.44 bar) 140 °F (60 °C) at 190 psi (13.1 bar) 180 °F (82 °C) at 100 psi (6.9 bar)

## Product Information and application use

Use Uponor PP-RCT saddles with Uponor PP-RCT mechanical pipe to convey water for hydronic heating and cooling or industrial applications.



Part name	Part no.	End Type 1	End Type 2
Uponor PP-RCT Saddle, 10" x 1", for Outlet Fusion	PR47810010	Saddle 10"	Socket 1"
Uponor PP-RCT Saddle, 10" x 2 1/2", for Outlet Fusion	PR47810025	Saddle 10"	Socket 2-1/2"
Uponor PP-RCT Saddle, 10" x 3", for Outlet Fusion	PR47810030	Saddle 10"	Socket 3"
Uponor PP-RCT Saddle, 10" x 4", for Outlet Fusion	PR47810040	Saddle 10"	Socket 4"
Uponor PP-RCT Saddle, 12" x 2", for Outlet Fusion	PR47812020	Saddle 12"	Socket 2"
Uponor PP-RCT Saddle, 12" x 2 1/2", for Outlet Fusion	PR47812025	Saddle 12"	Socket 2-1/2"
Uponor PP-RCT Saddle, 12" x 3", for Outlet Fusion	PR47812030	Saddle 12"	Socket 3"
Uponor PP-RCT Saddle, 12" x 4", for Outlet Fusion	PR47812040	Saddle 12"	Socket 4"
Uponor PP-RCT Saddle, 1 1/4" x 1/2", for Outlet Fusion	PR4781350	Saddle 1-1/4"	Socket 1/2"
Uponor PP-RCT Saddle, 1 1/4" x 3/4", for Outlet Fusion	PR4781375	Saddle 1-1/4"	Socket 1/2"
Uponor PP-RCT Saddle, 1 1/2" x 1/2", for Outlet Fusion	PR4781550	Saddle 1-1/2"	Socket 1/2"
Uponor PP-RCT Saddle, 1 1/2" x 3/4", for Outlet Fusion	PR4781575	Saddle 1-1/2"	Socket 3/4"
Uponor PP-RCT Saddle, 2" x 1", for Outlet Fusion	PR4782010	Saddle 2"	Socket 1"
Uponor PP-RCT Saddle, 2" x 1/2", for Outlet Fusion	PR4782050	Saddle 2"	Socket 1/2"
Uponor PP-RCT Saddle, 2" x 3/4", for Outlet Fusion	PR4782075	Saddle 2"	Socket 3/4"
Uponor PP-RCT Saddle, 2 1/2" x 1", for Outlet Fusion	PR4782510	Saddle 2-1/2"	Socket 1"
Uponor PP-RCT Saddle, 2 1/2" x 1/2", for Outlet Fusion	PR4782550	Saddle 2-1/2"	Socket 1/2"
Uponor PP-RCT Saddle, 2 1/2" x 3/4", for Outlet Fusion	PR4782575	Saddle 2-1/2"	Socket 3/4"
Uponor PP-RCT Saddle, 3" x 1", for Outlet Fusion	PR4783010	Saddle 3"	Socket 1"
Uponor PP-RCT Saddle, 3" x 1/2", for Outlet Fusion	PR4783050	Saddle 3"	Socket 1/2"
Uponor PP-RCT Saddle, 3" x 3/4", for Outlet Fusion	PR4783075	Saddle 3"	Socket 3/4"
Uponor PP-RCT Saddle, 4" x 1", for Outlet Fusion	PR4784010	Saddle 4"	Socket 1"
Uponor PP-RCT Saddle, 4" x 1 1/4", for Outlet Fusion	PR4784013	Saddle 4"	Socket 1-1/4"
Uponor PP-RCT Saddle, 4" x 1 1/2", for Outlet Fusion	PR4784015	Saddle 4"	Socket 1-1/2"
Uponor PP-RCT Saddle, 4" x 2", for Outlet Fusion	PR4784020	Saddle 4"	Socket 2"
Uponor PP-RCT Saddle, 4" x 1/2", for Outlet Fusion	PR4784050	Saddle 4"	Socket 1/2"
Uponor PP-RCT Saddle, 4" x 3/4", for Outlet Fusion	PR4784075	Saddle 4"	Socket 3/4"
Uponor PP-RCT Saddle, 6" x 1", for Outlet Fusion	PR4786010	Saddle 6"	Socket 1"

Uponor PP-RCT Saddle, 6" x 1 1/4", for Outlet Fusion	PR4786013	Saddle 6"	Socket 1-1/4"
Uponor PP-RCT Saddle, 6" x 1 1/2", for Outlet Fusion	PR4786015	Saddle 6"	Socket 1-1/2"
Uponor PP-RCT Saddle, 6" x 2", for Outlet Fusion	PR4786020	Saddle 6"	Socket 2"
Uponor PP-RCT Saddle, 6" x 2 1/2", for Outlet Fusion	PR4786025	Saddle 6"	Socket 2-1/2"
Uponor PP-RCT Saddle, 8" x 1", for Outlet Fusion	PR4788010	Saddle 8"	Socket 1"
Uponor PP-RCT Saddle, 8" x 1 1/2", for Outlet Fusion	PR4788015	Saddle 8"	Socket 1-1/2"
Uponor PP-RCT Saddle, 8" x 2", for Outlet Fusion	PR4788020	Saddle 8"	Socket 2"
Uponor PP-RCT Saddle, 8" x 2 1/2", for Outlet Fusion	PR4788025	Saddle 8"	Socket 2-1/2"
Uponor PP-RCT Saddle, 8" x 3", for Outlet Fusion	PR4788030	Saddle 8"	Socket 3"
Uponor PP-RCT Saddle, 8" x 4", for Outlet Fusion	PR4788040	Saddle 8"	Socket 4"
Uponor PP-RCT Saddle, 6" x 3", for Outlet Fusion	PR4786030	Saddle 6"	Socket 3"
Uponor PP-RCT Saddle, 10" x 2", for Outlet Fusion	PR47810020	Saddle 10"	Socket 2"
Uponor PP-RCT Saddle, 10" x 1 1/4", for Outlet Fusion	PR47810013	Saddle 10"	Socket 1-1/4"
Uponor PP-RCT Saddle, 10" x 1 1/2", for Outlet Fusion	PR47810015	Saddle 10"	Socket 1-1/2"
Uponor PP-RCT Saddle, 10" x 1/2", for Outlet Fusion	PR47810050	Saddle 10"	Socket 1/2"
Uponor PP-RCT Saddle, 10" x 3/4", for Outlet Fusion	PR47810075	Saddle 10"	Socket 3/4"
Uponor PP-RCT Saddle, 2 1/2" x 1 1/4", for Outlet Fusion	PR4782513	Saddle 2-1/2"	Socket 1-1/4"
Uponor PP-RCT Saddle, 3" x 1 1/4", for Outlet Fusion	PR4783013	Saddle 3"	Socket 1-1/4"
Uponor PP-RCT Saddle, 6" x 1/2", for Outlet Fusion	PR4786050	Saddle 6"	Socket 1/2"
Uponor PP-RCT Saddle, 6" x 3/4", for Outlet Fusion	PR4786075	Saddle 6"	Socket 3/4"
Uponor PP-RCT Saddle, 8" x 1 1/4", for Outlet Fusion	PR4788013	Saddle 8"	Socket 1-1/4"
Uponor PP-RCT Saddle, 8" x 1/2", for Outlet Fusion	PR4788050	Saddle 8"	Socket 1/2"
Uponor PP-RCT Saddle, 8" x 3/4", for Outlet Fusion	PR4788075	Saddle 8"	Socket 3/4"

Part name	Part no.	Codes	Standards	Listings
Uponor PP-RCT saddles (outlet and socket fusion)	All	CMC IMC UMC	ASTM E84 NSF/ANSI 14 ASTM F2389 CSA B137.11	ICC-ES-PMG 1106 IAPMO-R&T 8358 QAI P321-5 IAPMO K-12775

In addition, the following parts have additional codes, standards, or listings:

Uponor PP-RCT Saddle, 10" x 1 1/4", for Outlet Fusion	PR47810013		NSF/ANSI/CAN 61	
Uponor PP-RCT Saddle, 10" x 1 1/2", for Outlet Fusion	PR47810015		NSF/ANSI/CAN 61	
Uponor PP-RCT Saddle, 10" x 1/2", for Outlet Fusion	PR47810050		NSF/ANSI/CAN 61	
Uponor PP-RCT Saddle, 10" x 3/4", for Outlet Fusion	PR47810075		NSF/ANSI/CAN 61	
Uponor PP-RCT Saddle, 2 1/2" x 1 1/4", for Outlet Fusion	PR4782513		NSF/ANSI/CAN 61	
Uponor PP-RCT Saddle, 3" x 1 1/4", for Outlet Fusion	PR4783013		NSF/ANSI/CAN 61	
Uponor PP-RCT Saddle, 6" x 1/2", for Outlet Fusion	PR4786050		NSF/ANSI/CAN 61	
Uponor PP-RCT Saddle, 6" x 3/4", for Outlet Fusion	PR4786075		NSF/ANSI/CAN 61	
Uponor PP-RCT Saddle, 8" x 1 1/4", for Outlet Fusion	PR4788013		NSF/ANSI/CAN 61	
Uponor PP-RCT Saddle, 8" x 1/2", for Outlet Fusion	PR4788050		NSF/ANSI/CAN 61	
Uponor PP-RCT Saddle, 8" x 3/4", for Outlet Fusion	PR4788075		NSF/ANSI/CAN 61	

Installation	Related applications
Use approved socket-fusion connection methods. Refer to the Uponor PP-RCT manual for complete details.	Hydronic heating and cooling systems Industrial

Uponor Inc.  
5925 148th Street West  
Apple Valley, MN 55124  
T 800.321.4739  
F 952.891.2008

Uponor Ltd.  
6510 Kennedy Road  
Mississauga, ON L5T 2X4  
T 888.594.7726  
F 800.638.9517

---